

THE 66TH ANNUAL New Hampshire Antiques Show

Melissa Alden
Baker & Co. Antiques
Bittner Antiques
Pam & Martha Boynton
Tim Brennan & Dave Mouilleseaux
Brock & Co.
Hollis Brodrick
John Chaski Antiques
Cottage & Camp
DeWolfe and Wood
Early American Antiques
Matt Ehresman
Christopher & Bernadette Evans Antiques
Brian J. Ferguson
Robert T. Foley Antiques
Tucker Frey Antiques
Oliver Garland
Pat & Rich Garthoeffner
Gemini Antiques, Ltd.
Scott Bassoff and Sandy Jacobs
Bob Jessen & Jim Hohnwald
Jewett-Berdan Antiques
Kelly Kinzle

William & Teresa Kurau
Nathan Liverant and Son, LLC
Thomas R. Longacre Antiques
Sheridan Loyd Antiques
John Hunt Marshall
Ian McKelvey Antiques
Judith & James Milne/At Home Antiques
Jeff & Holly Noordsy Art and Antiques
The Norwoods' Spirit of America
Old as Adam
Olde Hope Antiques, Inc.
Hercules Pappachristos

Pewter & Wood Antiques
Sharon Platt American Antiques
Nancy & Gene Pratt
Thomas M. Rawson Antiques
Resser-Thorner Americana
Jeffrey Roelof
John H. Rogers Antiques
Peter Sawyer Antiques
David A. Schorsch - Eileen M. Smiles
Mary & Joshua Steenburgh
Jef & Terri Steingrebe
Stephen Douglas at Walpole
Steven F. Still Antiques
Paul D. Sullivan Antiques
David Thompson Antiques & Art
Jeffrey Tillou Antiques
Jonathan Trace
Earle D. Vandekar of Knightsbridge, Inc.
Village Braider, Inc.
Michael Whittemore Antiques & Folk Art
Withington & Co.
Douglas Wyant Antiques, LLC



August 10 – 12, 2023

THURSDAY & FRIDAY: 10AM – 7PM

SATURDAY: 10AM – 4PM

DoubleTree by Hilton
Manchester, NH • 603.625.1000

nhada.org

THE 66TH ANNUAL
New Hampshire Antiques ShowSPECIAL
SHOW
SECTION

BAKER & CO ANTIQUES, Delmar, N.Y. — A select assortment of smalls will be in our booth.



JEFF & HOLLY NOORDSY, Cornwall, Vt. — Finely rendered silhouette with the original red eglomise mat, circa 1830.



STEVEN F. STILL ANTIQUES, Manheim, Penn. — Rare McLoughlin Punch and Judy ten pins game, circa 1900.



KELLY KINZLE, New Oxford, Penn. — Queen Anne one-drawer mahogany table, Rhode Island or Massachusetts, circa 1760.



SCOTT BASSOFF * SANDY JACOBS, Swampscott, Mass. — Late Nineteenth-early Twentieth Century trade sign, double-sided, 29 by 26½ inches, black with gold lettering.

NHADA DEALER DIRECTORY

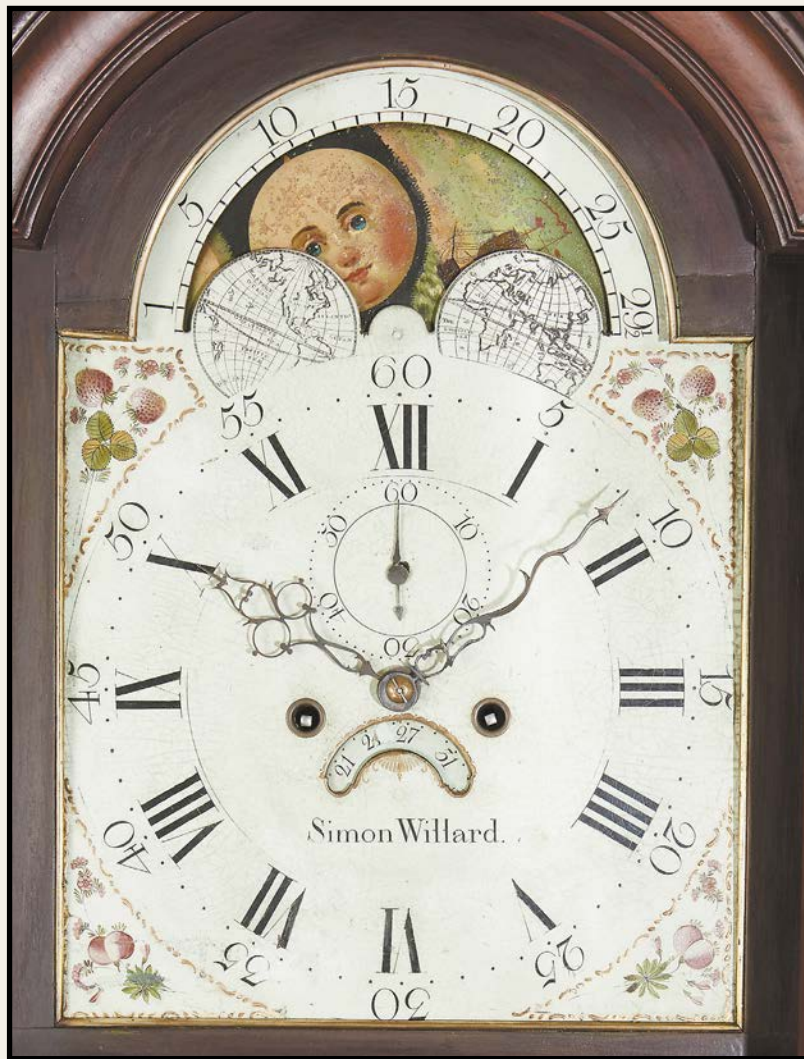
Melissa Alden, Portsmouth, NHNH-43
Baker & Co. Antiques, Lake George, NYNH-53
Bittner Antiques, Shelburne, VTNH-39
Pam & Martha Boynton, Townsend, MANH-51
Brennan and Mouilleseaux, Briarcliff Manor, NY.....NH-14
Hollis Brodrick, Portsmouth, NHNH-19
John Chaski Antiques, Camden, DENH-52
Cottage & Camp, Millerton, NYNH-10
DeWolfe and Wood, Alfred, MENH-15
Matt Ehresma, Wadsworth, OHNH-56
Christopher & Bernadette Evans Antiques,
Waynesboro, VANH-35
Brian J. Ferguson, Swansea, MANH-22
Robert T. Foley Antiques, Gray, MENH-38
Tucker Frey Antiques, Woodbury, CTNH-12
Oliver Garland, Falmouth, MA.....NH-11
Pat & Rich Garthoeffner, Lititz, PANH-55
Gemini Antiques, Ltd., Oldwick, NJNH-4
Scott Bassoff and Sandy Jacobs, Swampscott, MANH-7
Bob Jessen & Jim Hohnwald, Fitzwilliam, NHNH-54
Jewett-Berdan Antiques, Newcastle, MENH-30, 31
Kelly Kinzle, New Oxford, PANH-41
William & Teresa Kurau, Lampeter, PANH-47
Nathan Liverant and Son, LLC, Colchester, CTNH-57
Thomas R. Longacre Antiques, Marlborough, NHNH-46
Sheridan Loyd Antiques, St. Joseph, MONH-18
John Hunt Marshall Antiques, Westhampton, MANH-59
Ian McKelvey Antiques, So Windham, CTNH-28
Judith & James Milne Antiques, Kingston, NYNH-49

Jeff & Holly Noordsy Art and Antiques, Cornwall, VTNH-25
The Norwoods' Spirit of America, Timonium, MDNH-43
Old as Adam, Providence, RINH-44
Olde Hope Antiques, Inc., New York, NYNH-36
Hercules Pappachristos, Derry, NHNH-34
Pewter & Wood Antiques, Enfield, NHNH-6
Sharon Platt American Antiques, New Castle, NHNH-13
Nancy & Gene Pratt, Victor, NYNH-45
Thomas M. Rawson Antiques, Cedar Rapids, IANH-50
Resser-Thorner Antiques, Manchester, NHNH-23
Jeffrey Roelof, Kalamazoo, MINH-48
John H. Rogers Antiques, New London, NHNH-8
Peter Sawyer Antiques, Exeter, NHNH-3
David A. Schorsch - Eileen M. Smiles American Antiques,
Woodbury, CTNH-37
Mary & Joshua Steenburgh, Pike, NHNH-26
Jef & Terri Steingrebe, New London, NHNH-17, 20
Stephen/Douglas at Walpole, Walpole, NHNH-27
Steven F. Still Antiques, Manheim, PANH-9
Paul D. Sullivan Antiques, Manchester, NHNH-16
David Thompson Antiques & Art, So. Dennis, MANH-32
Jeffrey Tillou Antiques, Litchfield, CTNH-58
Jonathan Trace, Portsmouth, NHNH-21
Earle D. Vandekar of Knightsbridge, Inc., Downingtown, PANH-24
Village Braider, Inc., Plymouth, MANH-5
Michael Whittemore Antiques & Folk Art, Punta Gorda, FLNH-33
Withington & Co., York, MENH-29
Douglas Wyant Antiques, LLC, Cassopolis, MINH-40



PETER SAWYER ANTIQUES

17 COURT STREET
EXETER, NH 03833
603 772 5279



Simon Willard Tall Clock, Boston, circa 1790

Of unusually slender proportions, this outstanding inlaid mahogany case with original pierced fret and finials remains in an excellent state of preservation. The original enameled dial features a moon phase indicator and a bold signature of the maker. It also has the desirable feature of a brass surround attached to the dial mat. Eight-day movement in good running condition striking the hours on a bell. 96" tall.

We specialize in fine new england antiques from the late 18th and early 19th century. Generally, our shop is open monday-friday and visitors are invited to stop by anytime.

*To insure we are open, a call ahead is encouraged.
We are always eager to buy fine new england objects.*

*Peter Sawyer/Scott Bassett
Petersawyer@comcast.net
PeterSawyerAntiques.com*



THE 66TH ANNUAL New Hampshire Antiques Show

SPECIAL
SHOW
SECTION



STEPHEN / DOUGLAS, Walpole, N.H. / Rockingham, Vt. — Rare, Fallows manufactured (Penn.) tin wind-up toy horse-drawn water wagon, stenciled "Neptune," late Nineteenth Century.



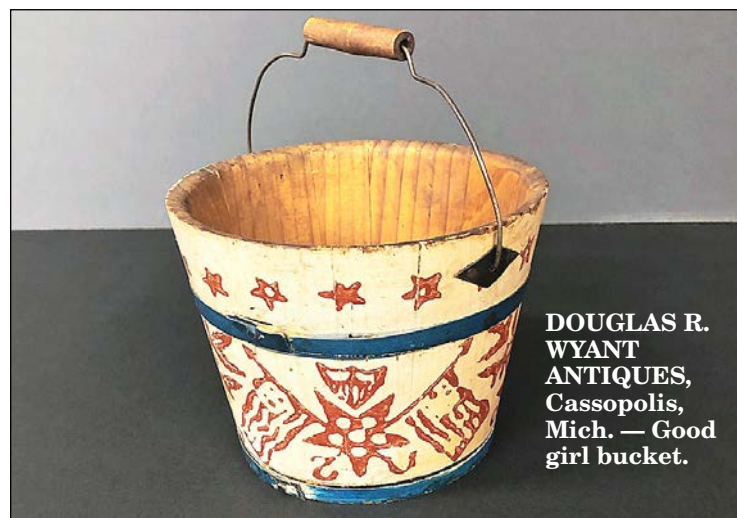
THE NORWOODS' SPIRIT OF AMERICA, Timonium, Md. — Beautifully paint-decorated and detailed ceremonial axe. Double sided, with one side reminding us to visit the sick; the other side encouraging us to educate the orphan. Length is 51 inches.



JEFF & HOLLY NOORDSY, Cornwall, Vt. — Blue-painted Nineteenth Century mortar and pestle with early make-do repair.



JEF & TERRI STEINGREBE, New London, N.H. — Owl form crow decoy.



DOUGLAS R. WYANT ANTIQUES, Cassopolis, Mich. — Good girl bucket.

Gemini Antiques Ltd.

Antique Toy, Bank & Folk Art Specialists

Bearded Mythical Agricultural Figure
Rare Cast Iron Architectural Element
By an Unknown New England Foundry
Circa 1875 - 22" Tall x 14" Wide



"The Seasons of the Year"
Spring-Summer-Fall-Winter
Austrian Glazed Ceramic Figures
Circa Late 1930's - Tallest is 19 1/4"

Peoples Line Omnibus Tin Toy
Made by the Althof-Bergmann Company
New York - Circa 1875 - 21 1/2" Long



P.O. Box 635 - Oldwick, NJ 08858
Leon Weiss: 917-991-7352 or leonweiss@me.com • Steven Weiss: 212-729-0011 or sweiss57@me.com



19th C. double sided taylor sign, painted wood with 5 colors on one side and 4 colors on the other, 49" by 23"

Village Braider Inc.

Plymouth, MA • 508-746-9625





THE 66TH ANNUAL New Hampshire Antiques Show

SPECIAL
SHOW
SECTION

COTTAGE & CAMP,
Millerton, N.Y. — Car-
nival targets on origi-
nal mount.



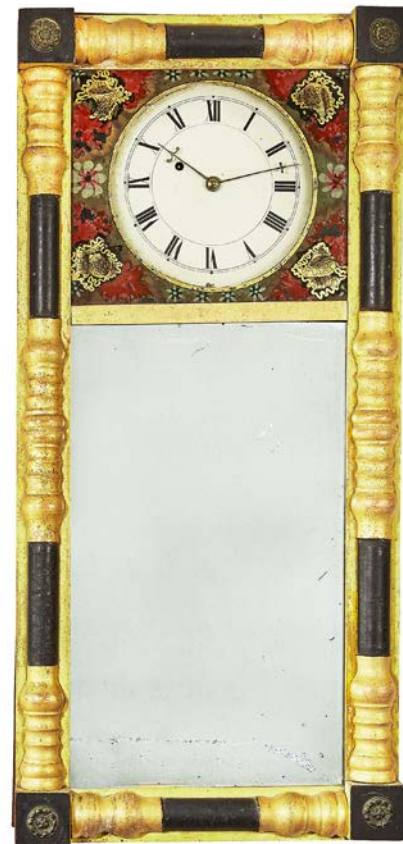
BITTNER ANTIQUES, Shelburne, Vt. —
Print of Teddy Roosevelt, 14 by 17 in-
ches, prominently signed in his last month
of presidency. With provenance.



VILLAGE BRAIDER, Plymouth, Mass. — Early Twenti-
eth Century winter scene, signed Alice Hagerty, titled
“Fox Hill,” oil on board, 14 by 17 inches image size.



SCOTT BASSOFF * SANDY
JACOBS, Swampscott, Mass. —
Late Nineteenth Century iron
boot scraper in the form of a
strutting chicken, 13 by 10½
inches. An identical version is in
the MFA gifted by Maxim Karo-
lik and was exhibited in the Art
of the Americas.



PETER SAWYER ANTIQUES,
Exeter, N.H. — Mirror Clock in
original condition attributed to
James Collins, Goffstown, N.H.

Pewter & Wood Antiques

Barbara Boardman Johnson | Enfield, NH | (602) 677-5686 | BOOTH #7



Hen & Chicks Hooked Rug.

Yarn hooked, late 19th- early 20thc. Bordered with yarn fringe, executed with brown background. Chicks hooked in yellow and light blue, hen in same light blue. Fringe matching reds and blue. Dimensions: 40 1/2" wide x 29" high. Professionally mounted on wooden frame.

SPECIAL
SHOW
SECTION

THE 66TH ANNUAL
New Hampshire Antiques Show



Scott Bassoff • Sandy Jacobs ANTIQUES



sandy jacobs
antiques

Swampscott, MA 01907 | 603.801.5532 mobile

www.sandyjacobsantiques.com | sandyjnh1@gmail.com | www.scottbassoffsandyjacobsantiques.com



Boston Paddy Wagon painting signed by S M Spooner, dated April 1889.
Intersection of Commercial St and Fleet St in Boston, MA. 30" by 20"



Minot Lighthouse [also known as Cohasset light] dramatic winter scene of a lighthouse rescue of the light house keeper during a surging sea in Boston Harbor into a boat. Late 19th c to early 20th c. Sight is 9" by 12". Known today as the Lovers Light. Light flashes "I love you" in Morse Code.



Extraordinary Georgian [1790-1820] necklace in 18k yellow gold with vibrant natural pink topaz with emerald accents.



American cherry wall box in original surface. Late 18th-early 19thC. Fantastic condition. Plaque reads "this cabinet belonged to my great grandfather Daniel Brown Jan 1772 Penn Yan July 1st, 1893, Lorimer Ogden"



THE 66TH ANNUAL New Hampshire Antiques Show

SPECIAL
SHOW
SECTION



**JEF & TERRI
STEINGREBE,**
New London, N.H. —
Jeanne Davies painting
“Salt & Pepper
with their Kitten.”



**RESSER-THORNER AMERI-
CANA,** Manchester, N.H. —
Benjamin Franklin terracotta
portrait medallion, signed
Nini and dated 1777. These
were ordered by Franklin,
himself, to be distributed to
friends and associates.

OLIVER GARLAND, Falmouth, Mass. —
Large Nineteenth Century carved wood
phoenix rising from the flames in original
polychrome paint.



CHRISTOPHER & BERNADETTE EVANS ANTIQUES, Waynesboro, Va. — American
hooked rug of two parrots, circa 1930, 27 by 37 inches. Professionally mounted for
hanging.



www.johnhrogersantiques.com • 603-526-6778 • jhwithrow@yahoo.com

John H. Rogers
ANTIQUES, LLC

SPECIAL
SHOW
SECTION

THE 66TH ANNUAL
New Hampshire Antiques Show



The New Hampshire Antiques Show

G.O.A.T.



Steven F. Still

Antiques

1717 South Colebrook Road • Manheim, PA 17545

Phone: (717) 459-3595 • Cell: (717) 682-0410

www.stevenstillantiques.com





THE 66TH ANNUAL New Hampshire Antiques Show

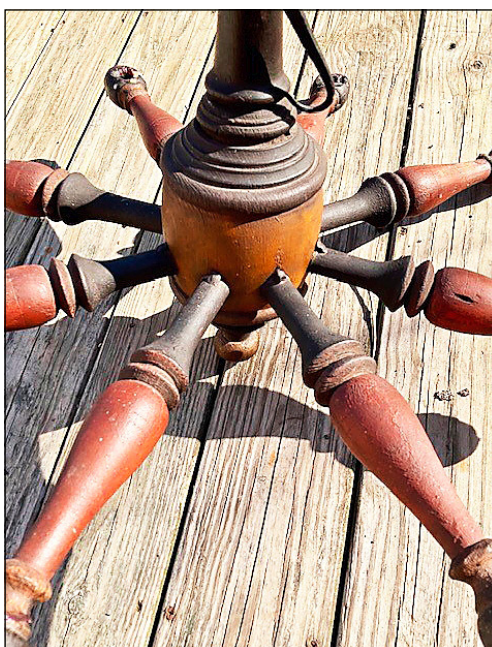
SPECIAL
SHOW
SECTION

BITTNER ANTIQUES, Shelburne, Vt. — Nineteenth Century high karat gold and enamel French vinaigrette, with only very minor wear.



THE NORWOODS' SPIRIT OF AMERICA, Timonium, Md. — Charming portrait miniature of a well-attired young male, holding a whip. Housed in period frame. The size is 5½ by 6½ inches.

JEWETT-BERDAN ANTIQUES, Newcastle, Maine — Details of an early painted wooden chandelier, early Nineteenth Century.



BOB JESSEN & JIM HOHNWALD, Fitzwilliam, N.H. — Jelly cupboard covered in vibrant paint decoration, Vermont or New York State origin, circa 1840s.

CHRISTOPHER & BERNADETTE EVANS ANTIQUES, Waynesboro, Va. — A manganese decorated redware jar with likely original lid attributed to Hagerstown, Md., first quarter of the Nineteenth Century.



part of our NHADA show stash!

COTTAGE + CAMP

23 Main Street
Millerton, NY

cottagecamp.net
Instagram@cottageandcamp

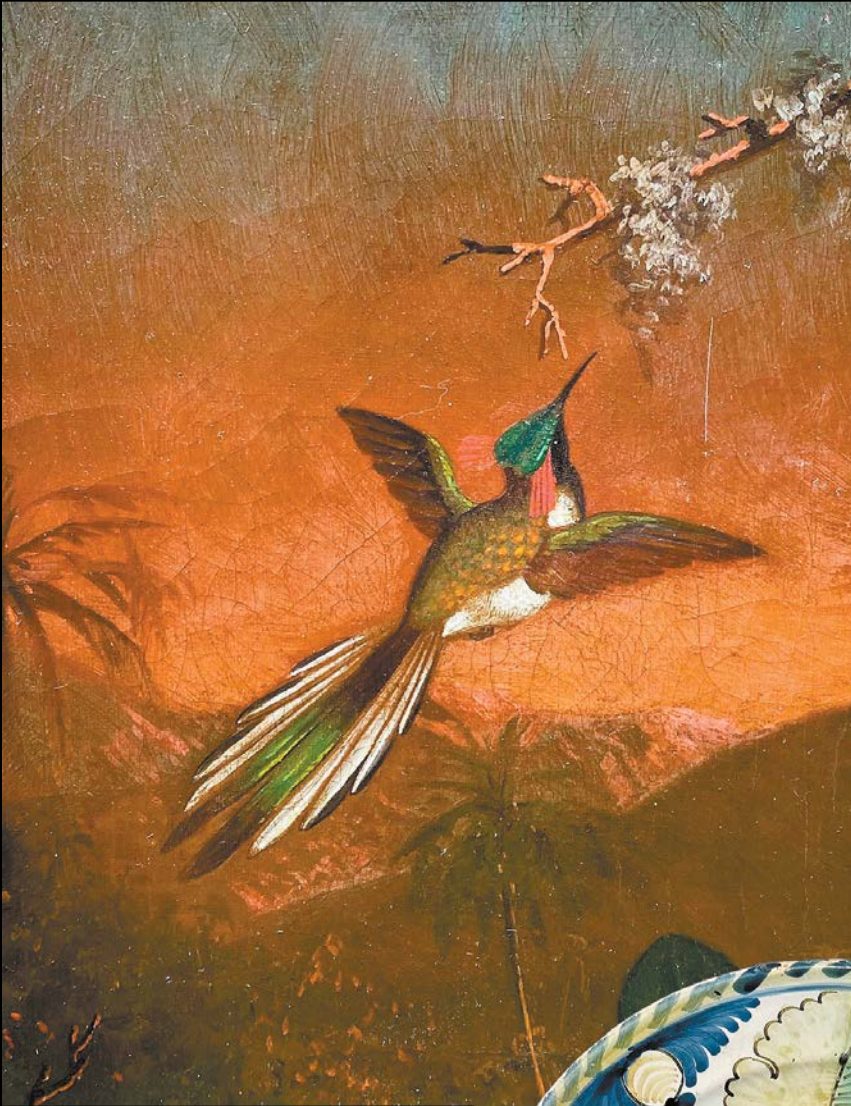
SPECIAL
SHOW
SECTION

THE 66TH ANNUAL
New Hampshire Antiques Show



OLIVER GARLAND

Please join us for our inaugural show
at the prestigious
66th Annual
New Hampshire Antiques Show
booth #17



Inquiries: 774-255-0199 • odgarland@gmail.com • Mail: PO Box 763, Falmouth, MA 02541



THE 66TH ANNUAL New Hampshire Antiques Show

SPECIAL
SHOW
SECTION



BAKER & CO ANTIQUES, Delmar, N.Y. — A sampling of cloth dolls on offer in our booth.

JEFF & HOLLY NOORDSY, Cornwall, Vt. — Blue-painted pantry box marked "coffee."



SCOTT BASSOFF * SANDY JACOBS, Swampscott, Mass. — Victorian 14K yellow gold pendant with locket back. Enamel painting of a winged fairy riding a scallop shell over the water pulled by two birds.



COTTAGE & CAMP, Millerton, N.Y. — Civil War chest.

The 66th Annual
New Hampshire Antiques Show

August 10 – 12, 2023

THURSDAY & FRIDAY: 10AM – 7PM

SATURDAY: 10AM – 4PM

DoubleTree by Hilton
Manchester, NH • 603.625.1000



C.P. Ream, 1837-1917,
12x16" sight

**TUCKER FREY
ANTIQUES**

256 MAIN STREET SOUTH
WOODBURY, CT 06798
(203) 263-5404

TFREY90549@AOL.COM

OPEN WED-SUN 11-4

SPECIAL
SHOW
SECTION

THE 66TH ANNUAL
New Hampshire Antiques Show



Sharon Platt

American
Antiques

Period Decorative Arts for the Early American Home



Rare 18th c. American Woman's Linen Stays



Small 18th New England Queen Anne Reed Used on an Early Loom



Rare Diminutive Miniatures: Ink Bottle, Make-Do Pin Cushion,
Pacifier, and Labeled Bottle.

Provenance: The Late Robert Thayer & Joan Thayer.



Booth No. 36

View www.sharonplatt.com for Ad Details

sharon@sharonplatt.com • 603-430-7556 • PO Box 723, New Castle, NH 03854



THE 66TH ANNUAL
New Hampshire Antiques Show

SPECIAL
SHOW
SECTION



use your imagination

period to mod

Brennan and Mouilleseaux
Antiques and Design

tbrennan296@gmail.com



JEWETT-BERDAN ANTIQUES, Newcastle, Maine — Oddfellow heart and hand plaque, late Nineteenth Century.



JEF & TERRI STEINGREBE, New London, N.H. — Two working Canada geese.



BITTNER ANTIQUES, Shelburne, Vt. — Correct map of New England, 1751, 42 by 19 inches.



DOUGLAS R. WYANT ANTIQUES, Cassopolis, Mich. — Miniature blanket chest.

Celebrate

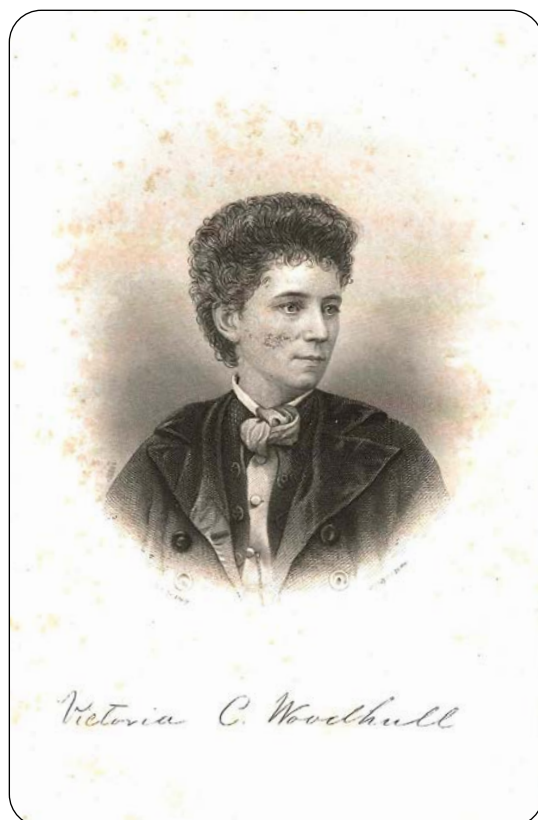


Cabinet photo of
Flora Stewart
formerly enslaved
African American Woman
living in Londonderry,
New Hampshire

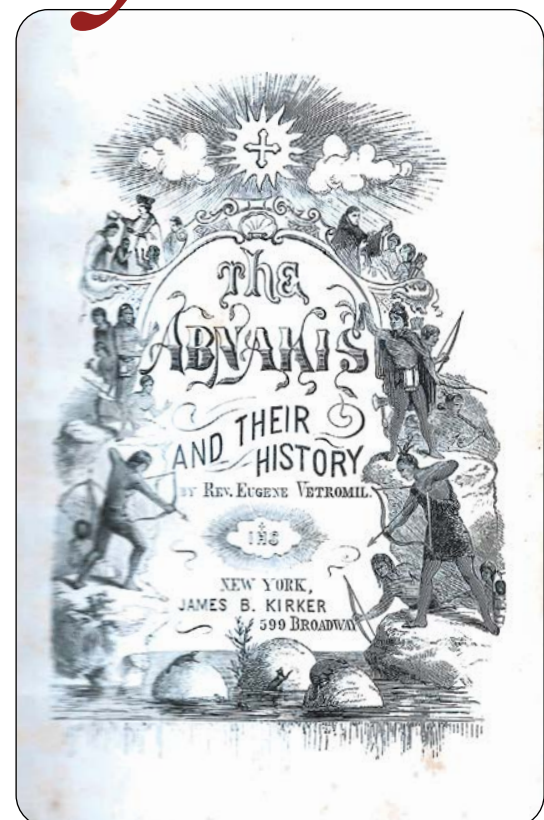


Cabinet photo of
Oscar Wilde taken on
his American tour.

Diversity



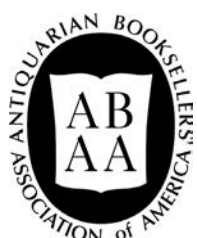
1871 Book by
Victoria Woodhull,
first woman
candidate for U.S.
President.



Native American
History of Abenakis
of Maine,
with letter by
the author.

DeWolfe & Wood Rare Books

Route 202, P.O. Box 425, Alfred, ME 04002
(207) 490-5572 • www.dewolfeandwood.com
dewolfeandwood@roadrunner.com



Successors to Tuttle's of Vermont serving collectors and readers since 1830
Find the best in rare books and ephemera at ABAA.org

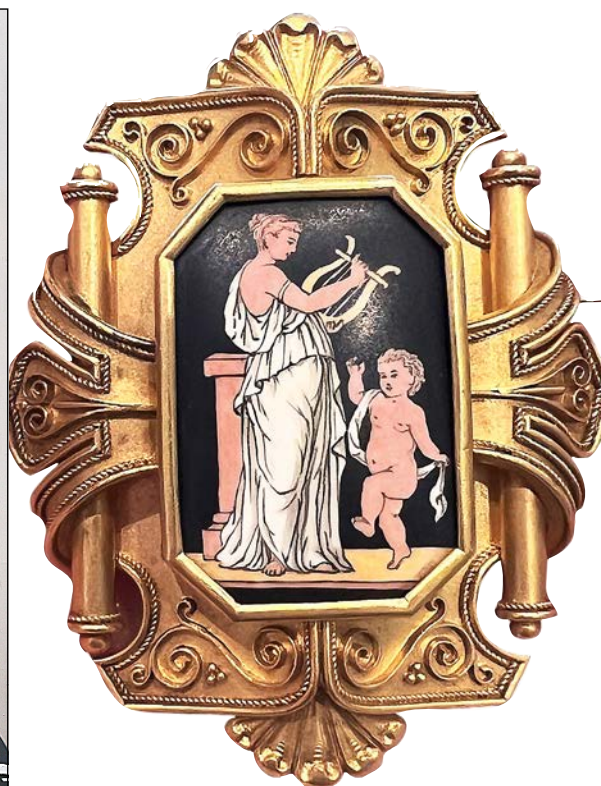


THE 66TH ANNUAL New Hampshire Antiques Show

SPECIAL
SHOW
SECTION



BOB JESSEN & JIM HOHNWALD, Fitzwilliam, N.H. — New England ladderback armchair, original paint. New England oval top candlestand, original paint. Oil painting on panel of a young woman in her "finery."



SCOTT BASSOFF * SANDY JACOBS, Swampscott, Mass. — Extraordinary Etruscan Revival (1860-70s) large brooch in 14K yellow gold. The center plaque is from an antique vase. The frame shows great skill in construction and execution. Can be worn as pendant or brooch. Excellent condition.



JEFF & HOLLY NOORDSY, Cornwall, Vt. — A pair of pattern molded objects from the early Nineteenth Century.

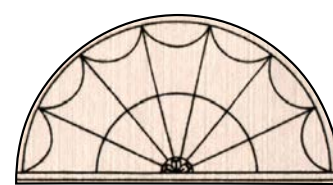


THE NORWOODS' SPIRIT OF AMERICA, Timonium, Md. — Early wooden tourist sign for the Douglas Inn, with fine molding, 48 by 17 inches.



A group of hand colored engravings by Martinet (1731-1800) framed as a collection, from a Blue Hill Maine estate.

Hope to see you there on the Main Aisle booth #24.



**Paul
Sullivan**
ANTIQUES

PO Box 3773
Manchester, NH 03105
603-669-8886

SPECIAL
SHOW
SECTION

THE 66TH ANNUAL
New Hampshire Antiques Show



Jef & Terri Steingrebe

P.O. Box 2268
New London, NH 03257
603-491-1767
Jefs@sunapee.net

Flag weathervane weathered
cream colored paint over
traces of original red and blue

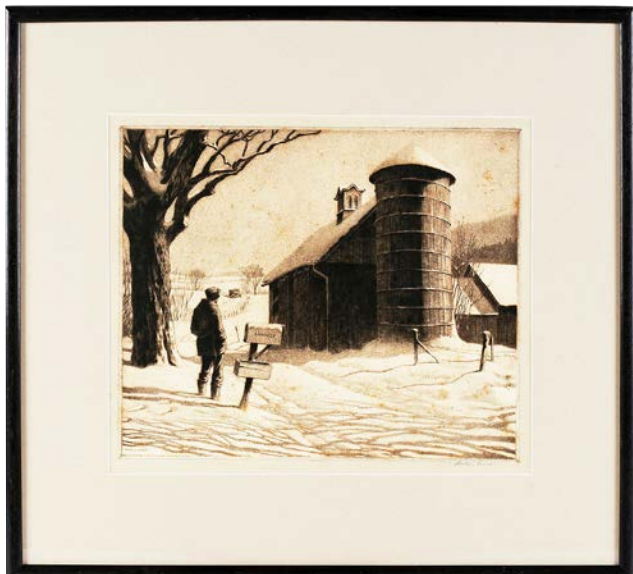


HMM... COLLECTION OR FETISH?



THE 66TH ANNUAL New Hampshire Antiques Show

SPECIAL
SHOW
SECTION



BITTNER ANTIQUES, Shelburne, Vt. — Martin Lewis, "Corner Shadows," 1930, drypoint etching, 12 by 12 inches.



NATHAN LIVERANT AND SON ANTIQUES, Colchester, Conn. — Federal figured maple and mahogany drop panel chest attributed to Joseph Clark (1767-1851) of Greenland, N.H., 1800-15.



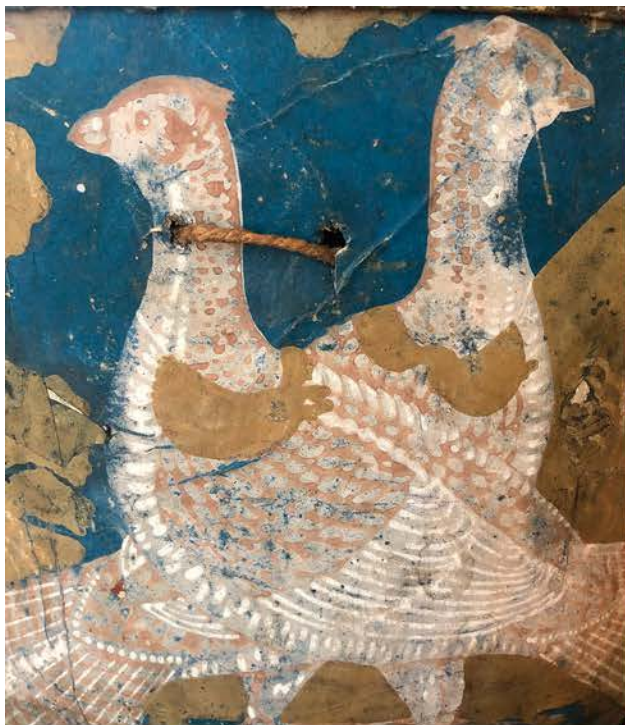
STEVEN F. STILL ANTIQUES, Manheim, Penn. — "Fresh Eggs" sign in original paint, circa 1900. Height: 21 inches; Width: 16 inches.



DAVID THOMPSON ANTIQUES & ART, South Dennis, Mass. — Eighteenth Century Delftware charger with rim edged in orange. Old, stapled repairs to cracks, some chips to rim and wear to bottom. Diameter: 13½ inches. From an old coastal Massachusetts collector's home.



ROBERT FOLEY, Gray, Maine — Sweet "Honey for Sale" sign, measuring 25 by 9 inches.



Sheridan Loyd

Booth 26 american ✨ antiques 816.210.6924

Here is just a sampling of the treasures that I have saved exclusively for the New Hampshire Dealers Show.

www.sheridanloyd.com

SPECIAL
SHOW
SECTION

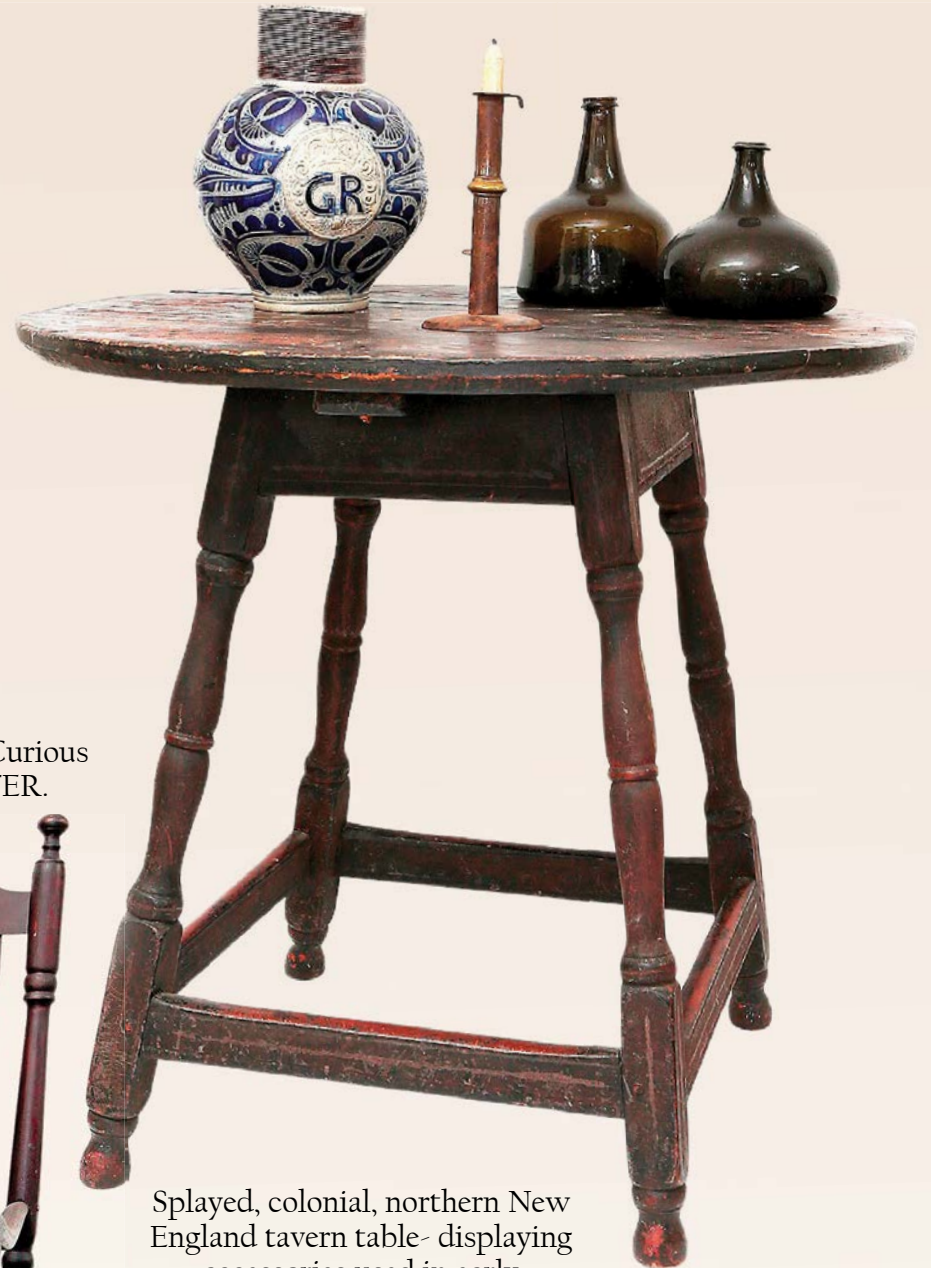
THE 66TH ANNUAL
New Hampshire Antiques Show



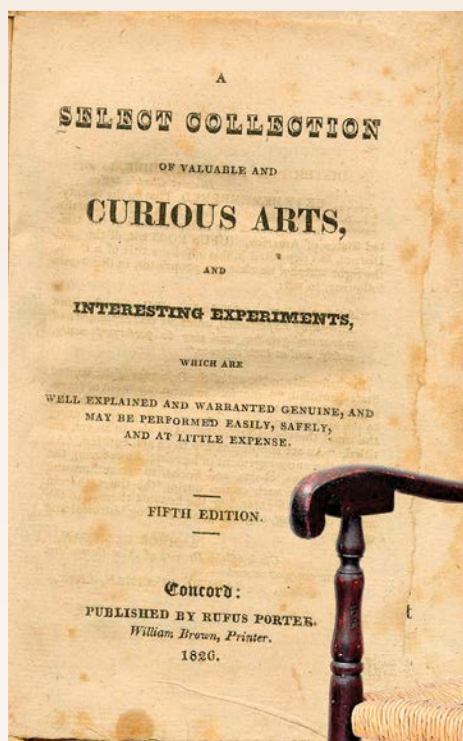
Hollis E. Brodrick
Arts & Artifacts of Early New England



Rare labelled and dated, colonial, Gloucester Massachusetts -1742 wallet. probably made by a Boston bookbinder!



Splayed, colonial, northern New England tavern table- displaying accessories used in early New England- ca 1710 to 1770



An original 1826 copy of "Curious Arts" By RUFUS PORTER.



Fine large, colonial New Hampshire banister back armchair in early surface, circa 1730- 1760- nearly 46 inches tall!



Exceptional pair of FLINTLOCK PISTOLS- brass mounted throughout- including lock plates, and barrels with beautifully turned "cannon" muzzles. Probably French, latter half of the 18thc.



Open by Appointment • 171 Washington Street, Portsmouth, NH
Mailing Address: PO Box 30 | Portsmouth, NH 03802 | 603-828-6158
email: hollisantiques@gmail.com
All items subject to prior sale

THE 66TH ANNUAL New Hampshire Antiques Show

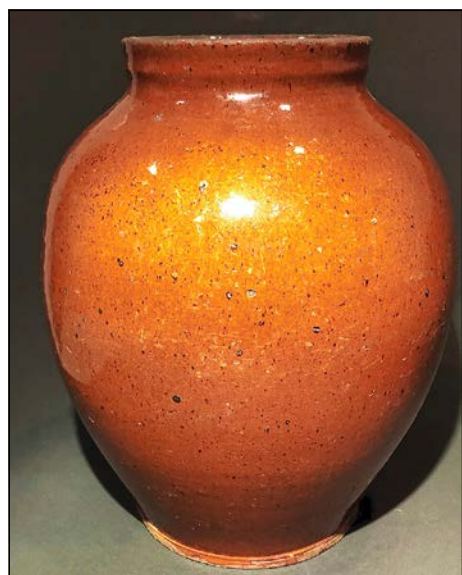
**SPECIAL
SHOW
SECTION**



RESSER-THORNER AMERICANA,
Manchester, N.H. — Howe.



STEPHEN / DOUGLAS, Walpole, N.H.
/ Rockingham, Vt. — Exceptional fire
bucket with original painted decora-
tion, early Nineteenth Century, Mas-
sachusetts origin.



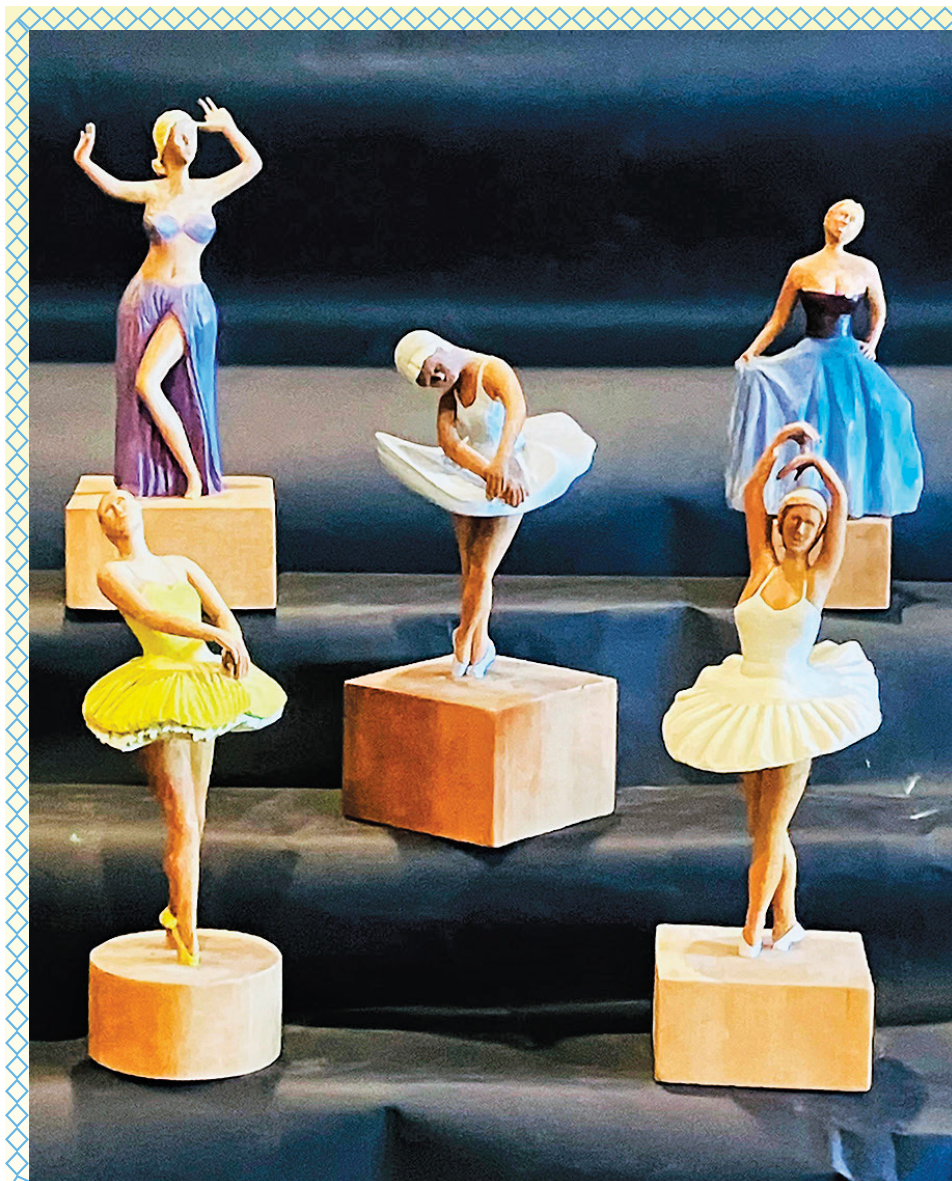
**CHRISTOPHER & BERNADETTE
EVANS ANTIQUES,** Waynesboro, Va. —
Highly ovoid central Pennsylvania red-
ware jar.



BITTNER ANTIQUES, Shelburne, Vt. — Impressive pair mid-
Eighteenth Century Boston porringers. One signed Jacob Hurd,
the second unsigned but dated 1752.



STEVEN F. STILL ANTIQUES, Manheim, Penn. — Nice selection
of small paper and cloth covered boxes priced from \$950 to \$1,450.



Group of 5 carved and painted dancers all signed on bottoms
H. D. BAILEY and dated from early 1940s to early 50s.
Each is remarkably carved from a single piece of wood.
The largest ballerina is about 12 inches tall

Jef & Terri Steingrebe

P.O. Box 2268

New London, NH 03257

603-491-1767 • jefs@sunapee.net



Early American Silver Tankard
made by
William Simpkins
Boston, c.1765



Engraved: C. on handle for Thomas and Elizabeth Cutts
T*E

Kane "Mark D" on bottom and to the left of handle

Listed in Kane, page 898

Height to Top of Finial: 8 ¾"

Jonathan Trace

BY APPOINTMENT

POST OFFICE BOX 420 • PORTSMOUTH, NH 03802

(603) 431-1197 • JTRACEANTIQUES@MAC.COM

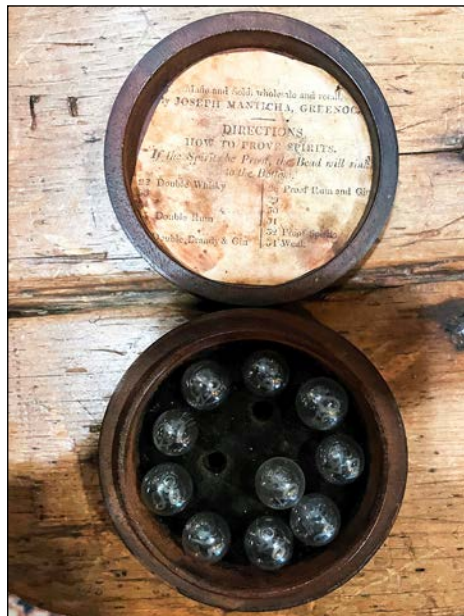
We are always interested in purchasing fine American silver and
furniture-single items or collections.



THE 66TH ANNUAL New Hampshire Antiques Show

SPECIAL
SHOW
SECTION

KELLY KINZLE, New Oxford, Penn. — Very rare ostrich carousel figure by the Dentzel Carousel Company of Philadelphia, circa 1900.



HOLLIS BRODRICK, Portsmouth, N.H. — Rare box of glass hydrometers used by merchants and tavern keepers to test that liquor they bought was full proof, and not watered down, circa 1800 to about 1825.

ROBERT FOLEY, Gray, Maine — Apprentice tinsmith “Final Exam” tin star, 26 points, 11½ inches.

NATHAN LIVERANT AND SON ANTIQUES, Colchester, Conn. — Portrait of a woman holding a book, oil on panel, attributed to Noah North (1809-1880) of New York and Ohio, 1825-35.

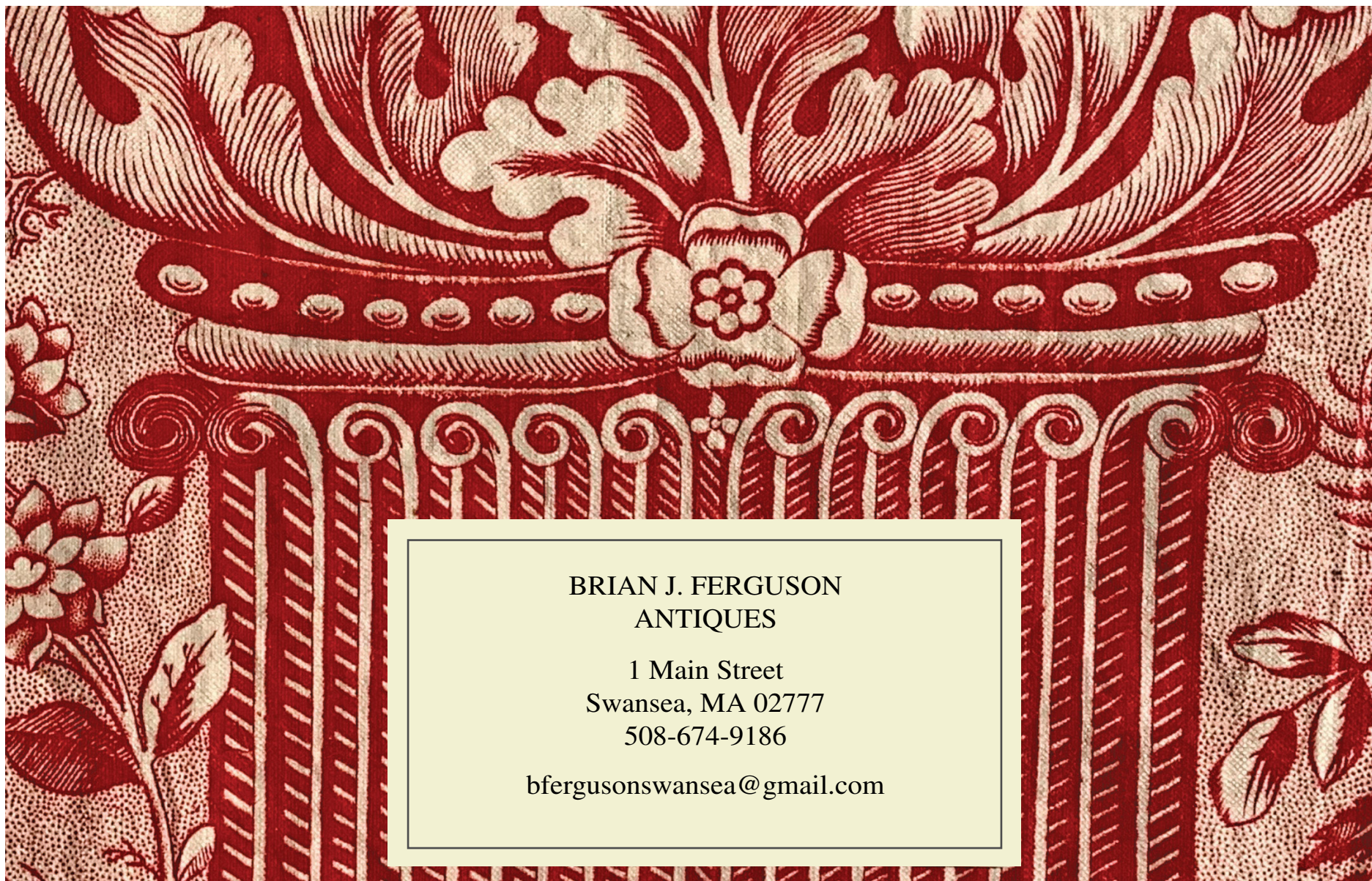
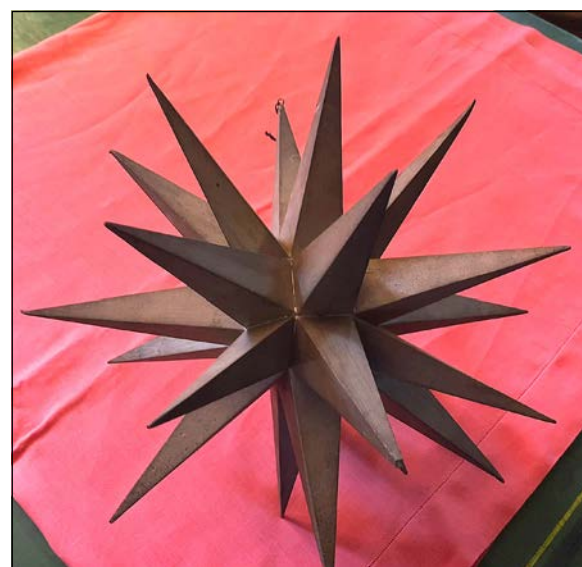
August 10 – 12, 2023

THURSDAY & FRIDAY: 10AM – 7PM

SATURDAY: 10AM – 4PM



JEWETT-BERDAN ANTIQUES, Newcastle, Maine — Vibrant theorem on velvet by the Smith family of Bangor, Maine, circa 1835.



**BRIAN J. FERGUSON
ANTIQUES**

1 Main Street
Swansea, MA 02777
508-674-9186

bfergusonswansea@gmail.com

SPECIAL
SHOW
SECTION

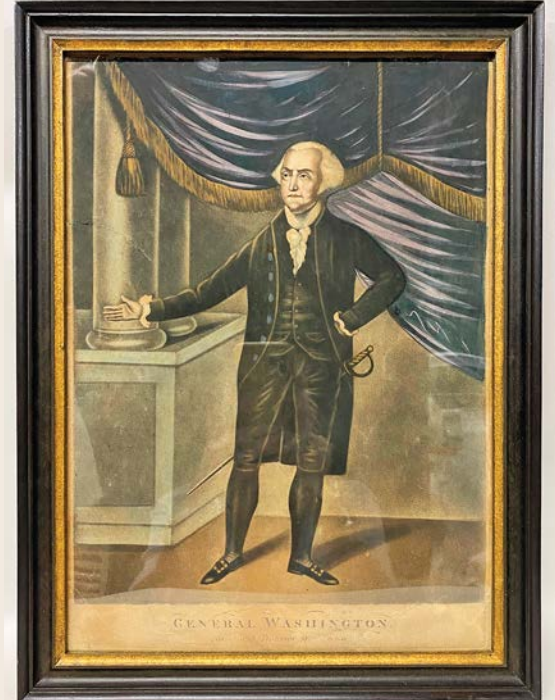
THE 66TH ANNUAL New Hampshire Antiques Show



"George Washington, Esq. General and Commander in Chief of the Continental Army in America," mezzotint, 1775, published by Sheperd, 18.5" x 14", period frame, ex-Old Print Shop



"His Excellency George Washington..." colored engraving, c. 1785-1800, 16" x 14.75" (frame; by Perry Hopf), Hart 725, Wick 100



"General Washington Father and Protector of America," colored mezzotint, c. 1800, 16" x 12" (frame; by Perry Hopf).

Washington and His Commanders



"Horatio Gates Esq. Major General of the American Forces," mezzotint, 1778, published by John Morris (sold in Augsburg), 18.5" x 13.5" (frame), period frame by Old Print Shop



"Charles Lee, Esq. Major General of the Continental Army in America," mezzotint, 1775, published by Shepherd, 16" x 12" (frame), 18th century frame



"Commodore Hopkins Commander in Chief of the American Fleet," mezzotint, 1776, published by Thomas Hart, 18.5" x 14.5" (frame), period frame by Old Print Shop

RESSER-THORNER
AMERICANA

A single-owner shop in the New England tradition



603-540-4712

695 River Road, Manchester, NH 03104

By Appointment





THE 66TH ANNUAL New Hampshire Antiques Show

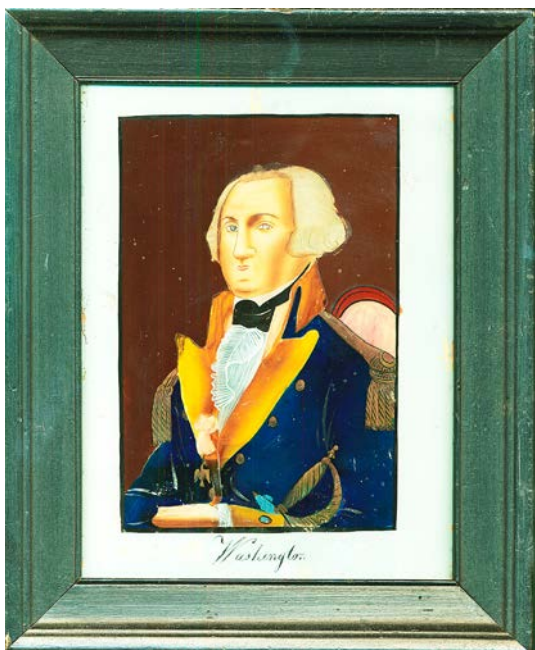
SPECIAL
SHOW
SECTION



JEF & TERRI STEINGREBE, New London, N.H. — A colorful folk painting.



NANCY & GENE PRATT, Victor, N.Y. — Carved cakeboard in the form of a heart, likely either Conger or Watkins.



HOLLIS BRODRICK, Portsmouth, N.H. — Early reverse glass painted portrait of George Washington.



BRENNAN & MOUILLESEUX, Briarcliff Manor, N.Y. — Country Vicky hunt theme sideboard, circa 1860. Country Vicky cool.



BAKER & CO ANTIQUES, Delmar, N.Y. — Offering this ex Splendid Peasant Antiques Nineteenth Century painted wooden marble shoot game.

Earle D. Vandekar of Knightsbridge, Inc.



PO Box 586 • Downingtown, PA 19335
Tel: 212-308-2022 • cell: 917-576-1354
www.Vandekar.com
twitter: PVandekar

**English Liverpool Delftware Fazackerly Large Dish
with Bird, Circa 1760**
Dimensions: 16 1/2 inches wide x 13 3/4 inches

Member of the British Antique Dealers'
Association (BADA),
Art & Antique Dealers League of America
& Antiques Council



The Race Is On!

...and here comes Pride in the backstretch...

No need to gallop but we hope you'll saunter by booth #32
to check out all of our fresh finds this year!



Jeff and Holly Noordsy

18 Route 74, Cornwall, VT

www.noordsyantiques.com • jeffnhol@gmail.com • 802-462-2901

THE 66TH ANNUAL New Hampshire Antiques Show

SPECIAL
SHOW
SECTION



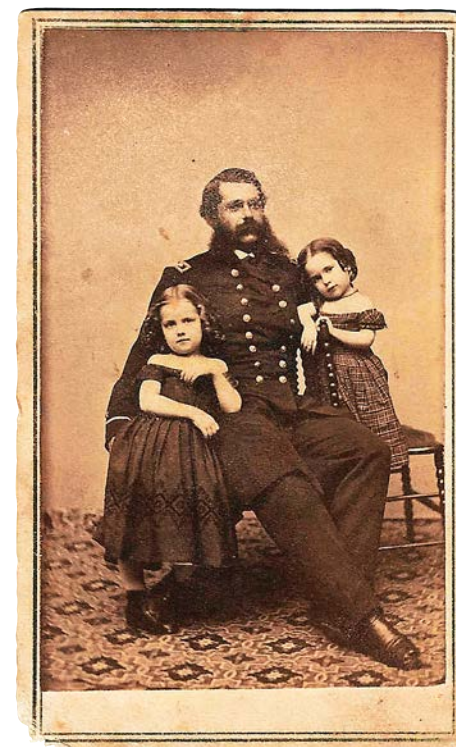
VILLAGE BRAIDER, Plymouth, Mass. — Turn-of-the-century painting of a farrier, signed Clark S. Marshall, oil on board, 12 by 14 inches image size.



SCOTT BASSOFF * SANDY JACOBS, Swampscott, Mass. — Hand-drawn map of Massachusetts counties signed by Ellen R. Carpenter in 1852. Hope this wasn't a class assignment as she forgot to add Suffolk (Boston and area) and Norfolk. Charming piece framed with glass on both sides. Map is 6 by 4½ inches.



COTTAGE & CAMP, Millerton, N.Y. — Mysterious marble eye.



DeWOLFE & WOOD, Alfred, Maine — Civil War CDV.

JEF & TERRI STEINGREBE, New London, N.H. — Carved and polychromed bird tree.



MARY & JOSHUA STEENBURGH

Early 20th c. Ship Diorama 18" x 18"



19th c. Quill Weathervane
25" x 8"



19th c. Odd Fellows Carved Eye Plaque 16"
20th NH Tourists Sign 26" x 14"



523 Jeffers Hill Road Pike, New Hampshire 03780

jwsteenburgh@gmail.com 603.303.3072

SPECIAL
SHOW
SECTION

THE 66TH ANNUAL
New Hampshire Antiques Show



Walpole, New Hampshire
603-903-5023

Rockingham, Vermont
802-463-4296

STEPHEN / DOUGLAS



Folky late 18th-century needlework picture of great charm. ex. John Walton, American, with possible Connecticut origin, c. 1780-1800.



Rare American needlework woman's shoes with heart motif, c. 1760-1780.

Offering 17th, 18th,
and 19th century
American Antiques.



Pennsylvania, 18th-century needlework woman's pocket.



THE 66TH ANNUAL New Hampshire Antiques Show

SPECIAL
SHOW
SECTION



OLIVER GARLAND, Falmouth, Mass. — Pair of Nineteenth Century Barbados shellwork ladies, 12 inches tall.



DeWOLFE & WOOD, Alfred, Maine — Patriotic CDV.



JEF & TERRI STEINGREBE, New London, N.H. — Carved and painted King Kong.



JEWETT-BERDAN ANTIQUES, Newcastle, Maine — Vibrant Pennsylvania decorated donut box, mid-Nineteenth Century.



The 66th Annual
New Hampshire Antiques Show

August 10 – 12, 2023

THURSDAY & FRIDAY: 10AM – 7PM

SATURDAY: 10AM – 4PM

DoubleTree by Hilton
Manchester, NH • 603.625.1000



Ca 1930-1940
carved
polychrome
painted
full figure
sculpture of a
ballerina
en pointe.
36.5" tall

17th C American
carved pine
bible box



Antique carved
and painted
fishing lure
trade sign.
60" long

IAN MCKELVEY ANTIQUES

South Windham, CT • 860-781-0081

American Schoolgirl Pictorial Needlework C. 1790-1820



An inspired design of a girl with her goat in front of a garden house with lattice doorway and rose covered trellis amid rolling fields and orchard. Twisted silk threads and silk floss on linen, the ground solidly cross stitched, the figures with twisted silk threads. Found in North Dutchess County, N.Y. having Crane family history. Original frame 22" x 27"

Withington & Company

2 Old County Road, Cape Neddick, Maine 03902
Instagram: @withingtonantiques • Tel: 603.498.4778

*Welcoming you to our barn shop and gardens
Thursdays 10-6 or by appointment/chance anytime.*



THE 66TH ANNUAL
New Hampshire Antiques Show

SPECIAL
SHOW
SECTION

Jewett-Berdan



Let's Talk About The Elephant In The Room

An extraordinary folk carved wooden and tin elephant toy in original paint late 19th century.
There is a hand crank on one side that moves head up and down.
Measures 25" t x 40" w.

Thomas J. Jewett



15 Hopkins Hill Road
Newcastle, Maine 04553
jewett-berdan@roadrunner.com
www.Jewett-Berdan.com
(207) 563-3682



Charles P. Berdan

SPECIAL
SHOW
SECTION

THE 66TH ANNUAL
New Hampshire Antiques Show



Jewett-Berdan



Thomas J. Jewett



15 Hopkins Hill Road
Newcastle, Maine 04553
jewett-berdan@roadrunner.com
www.Jewett-Berdan.com
(207) 563-3682



Charles P. Berdan

THE 66TH ANNUAL New Hampshire Antiques Show

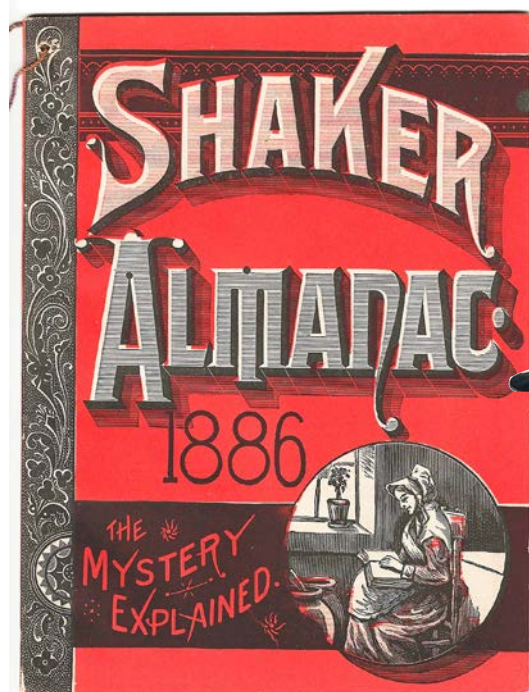
SPECIAL
SHOW
SECTION



JEFFREY TILLOU ANTIQUES, Buffalo, N.Y. — George Stapf (1862-1958), lived/active: Harrisburg and Lancaster, Penn., a carved patriotic eagle with spread wings and American flag, circa 1900, carved pine with gilt and polychrome paint. Overall in great condition, paint and gilt wear from weathering commensurate with age and use. Probably missing shield originally clasped in talons. These highly sought-after carved eagles by George Stapf are increasingly hard to find in untouched condition. This eagle with the carved polychrome painted American flag is among the more desirable examples he made. Dimensions: 21 inches high, 33½ inches wide. Provenance: Collection of Charles and Olenka Santore.

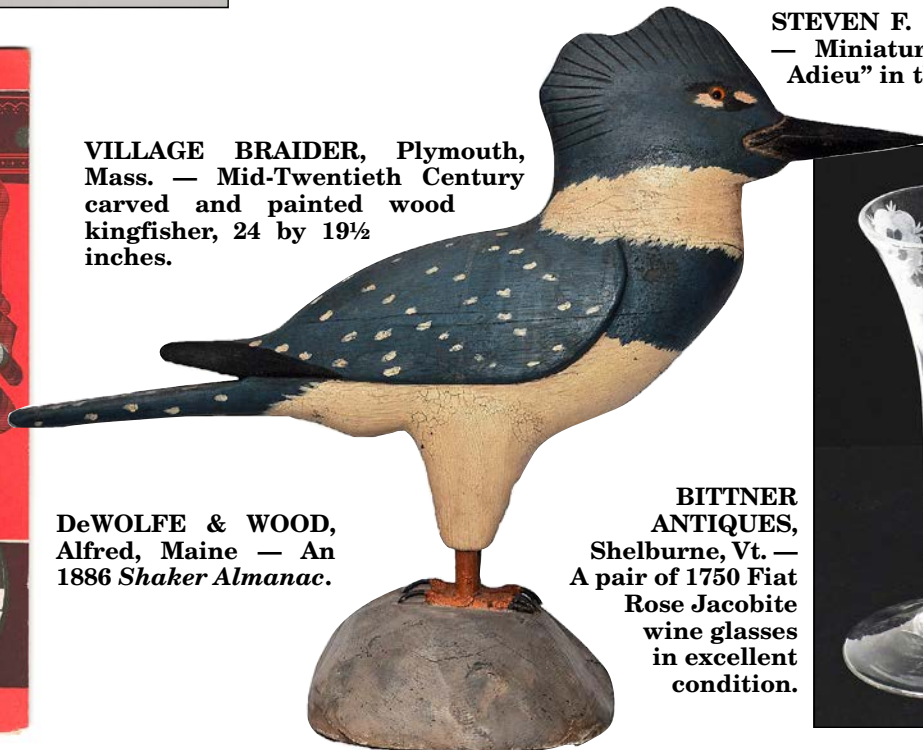


STEVEN F. STILL ANTIQUES, Manheim, Penn. — Miniature watercolor titled "The Sailor's Adieu" in the original frame from the first half of the Nineteenth Century.

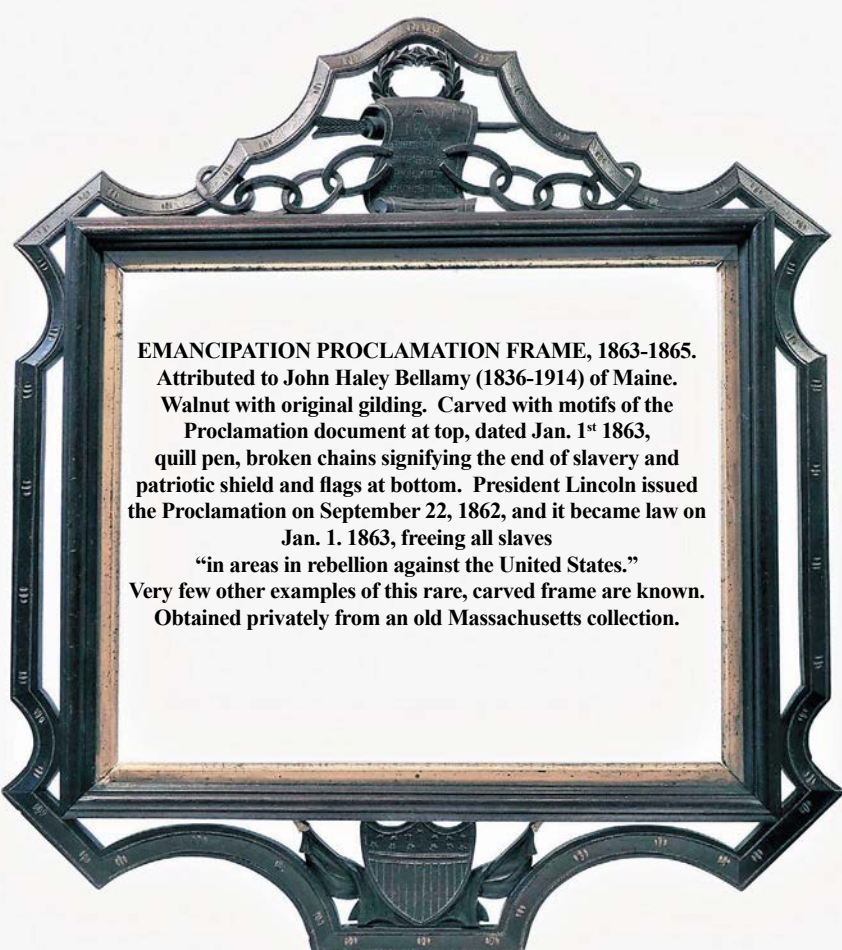


VILLAGE BRAIDER, Plymouth, Mass. — Mid-Twentieth Century carved and painted wood kingfisher, 24 by 19½ inches.

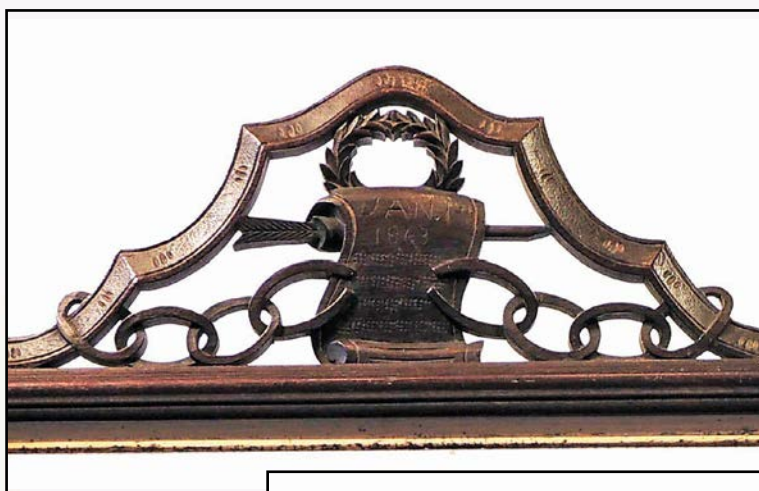
DeWOLFE & WOOD, Alfred, Maine — An 1886 *Shaker Almanac*.



BITTNER ANTIQUES, Shelburne, Vt. — A pair of 1750 Fiat Rose Jacobite wine glasses in excellent condition.



EMANCIPATION PROCLAMATION FRAME, 1863-1865. Attributed to John Haley Bellamy (1836-1914) of Maine. Walnut with original gilding. Carved with motifs of the Proclamation document at top, dated Jan. 1st 1863, quill pen, broken chains signifying the end of slavery and patriotic shield and flags at bottom. President Lincoln issued the Proclamation on September 22, 1862, and it became law on Jan. 1, 1863, freeing all slaves "in areas in rebellion against the United States." Very few other examples of this rare, carved frame are known. Obtained privately from an old Massachusetts collection.



DAVID THOMPSON ANTIQUES & ART

David Thompson Jane Turano-Thompson
dtjt@sover.net South Dennis, M A



Michael Whittemore

Antiques & Folk Art

980 Coronado Drive, Punta Gorda, Florida 33950
860-428-1135



Rare "Rochester" Rooster Weatherwane

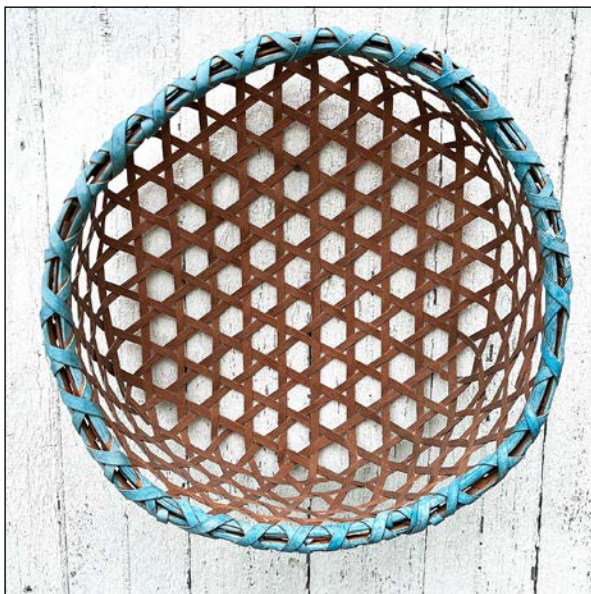
Copper with Cast Bronze Feet, 30" x 30"
Original Condition & Surface, c. 1875-1895
Unknown Maker

THE 66TH ANNUAL New Hampshire Antiques Show

**SPECIAL
SHOW
SECTION**



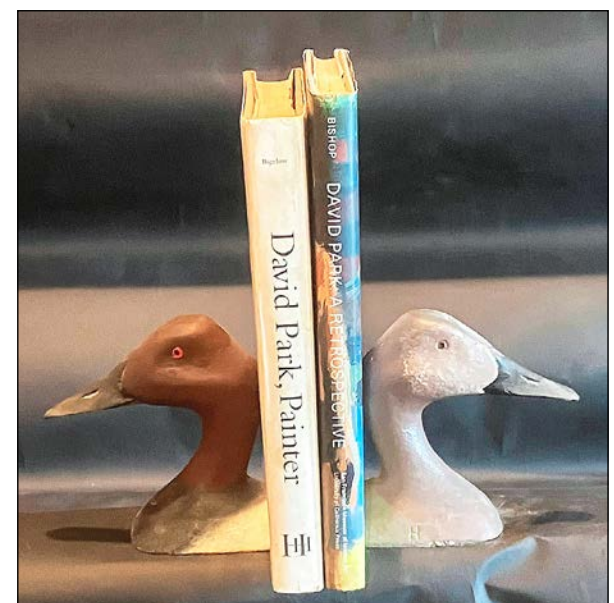
STEPHEN / DOUGLAS, Walpole, N.H. / Rockingham, Vt.
— Small graphite drawing of a folk horse, American, mid-Nineteenth Century.



COTTAGE & CAMP, Millerton, N.Y. — Blue cheese basket.



JEFF & HOLLY NOORDSY, Cornwall, Vt.
— Unusually formed New England or New York State redware jug, circa 1840



JEF & TERRI STEINGREBE, New London, N.H.
— Pair of cast iron duck head bookends.



HERCULES J. PAPPACHRISTOS

ART & ANTIQUES



(603) 548-5959
herculesderry@comcast.net

Joseph Eliot Enneking,
(American, 1881-1942)
In The Mountains
Oil on board, 8" x 10"

Exhibited; Salmagundi Club,
Rockport Art Association,
Gloucester Society of Artists and
The Marblehead Arts Association.

Christopher and Bernadette Evans Antiques Folk Art and Country Americana



Booth 54; Downstairs, Center Aisle

www.candbevansantiques.com

cevans62@yahoo.com

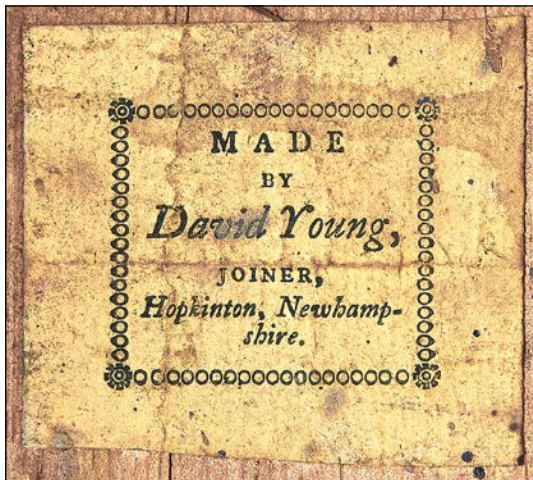
(240)-818-7810

THE 66TH ANNUAL New Hampshire Antiques Show

SPECIAL
SHOW
SECTION



HOLLIS BRODRICK, Portsmouth, N.H. — Two Seventeenth Century Bellarmine jugs, together with a rare, early, Chesham, N.H., pottery redware jug.



PETER SAWYER ANTIQUES, Exeter, N.H. — Tall clock by Levi and Abel Hutchins, Concord, N.H., circa 1800, with original paper label of the case maker David Young, Hopkinton, N.H.



RESSER-THORNER AMERICANA, Manchester, N.H. — Johannes Hubertus Van Hove (Dutch, 1827-1881), oil on board, signed lower right.



OLDE
HOPE

AMERICAN FOLK &
DECORATIVE ARTS
OF DISTINCTION

OldeHope.com
215-297-0200
info@oldehope.com

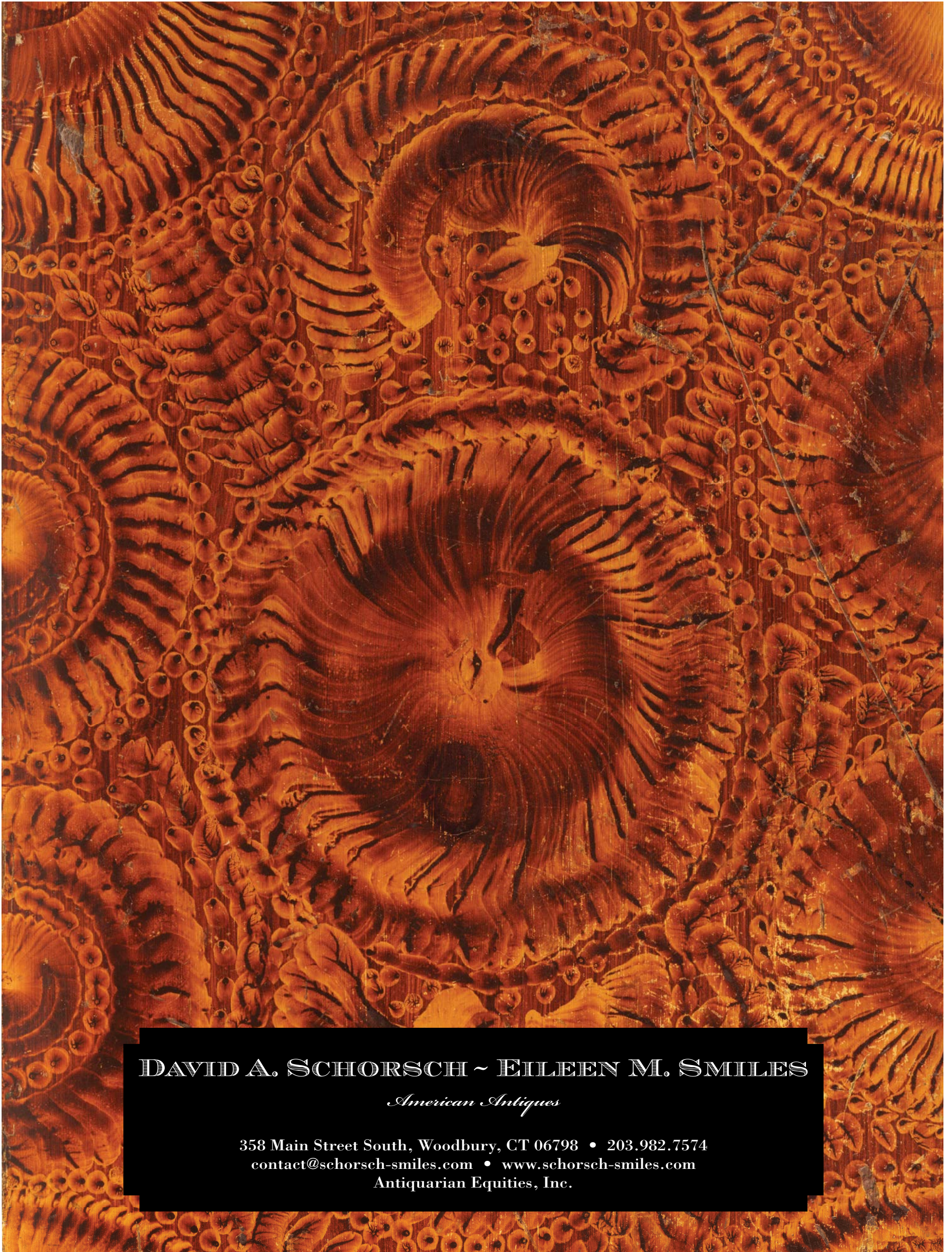
📍 115 East 72nd St, 1B
New York, NY 10021
📍 PO Box 718,
New Hope, PA 18938





SPECIAL
SHOW
SECTION

THE 66TH ANNUAL
New Hampshire Antiques Show



DAVID A. SCHORSCH ~ EILEEN M. SMILES

American Antiques

358 Main Street South, Woodbury, CT 06798 • 203.982.7574
contact@schorsch-smiles.com • www.schorsch-smiles.com
Antiquarian Equities, Inc.

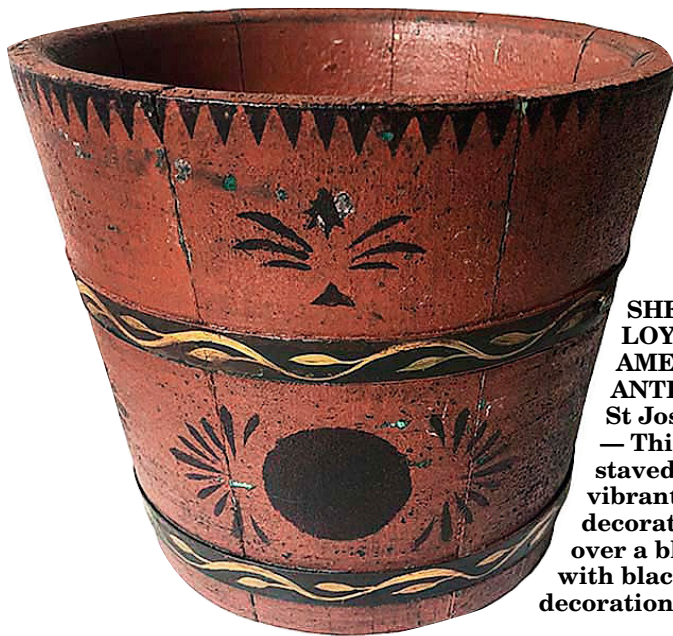


THE 66TH ANNUAL New Hampshire Antiques Show

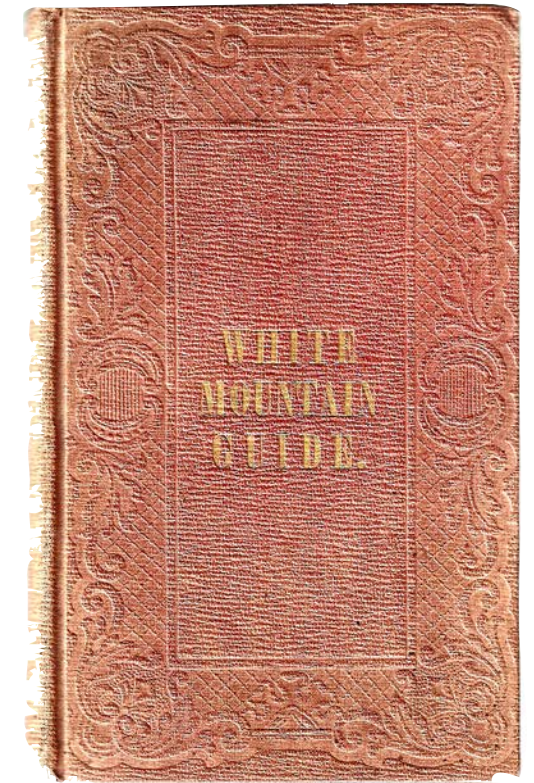
SPECIAL
SHOW
SECTION



**JEWETT-BERDAN
ANTIQUES**, Newcastle,
Maine — Hooked rug of a
menagerie of animals, circa
1920.



**SHERIDAN
LOYD
AMERICAN
ANTIQUES**,
St Joseph, Mo.
— This small,
staved bucket is
vibrantly paint-
decorated in red
over a blue primer,
with black and gold
decorations.



DeWOLFE & WOOD, Alfred, Maine
— *White Mountain Guide*.



JEF & TERRI STEINGREBE, New Lon-
don, N.H. — Carved and painted penguin.



Sight Size: 22 1/2" x 13" Overall Size: 29" x 20"

FINE NEW ENGLAND DIORAMA
Robert T. Foley Gray, Maine (207) 756-4290 Booth 57

SPECIAL
SHOW
SECTION

THE 66TH ANNUAL
New Hampshire Antiques Show



A FAMILY TRADE SINCE 1960

Bittner Antiques

SHELBURNE, VT

JOIN US FOR OUR DEBUT SHOW AT NHADA



1920's Art Deco
Cartier Desk Clock
Gold, Marble,
Painted Metal



Chestnut Beehive
Turned Bowl
9 1/2" in Old Green Paint



Exceedingly Rare Bank Note
Cigars Tin Litho Sign



Pave Set Turquoise/Pearl
Locket Pendant in 18k Gold
2 3/8" w/ Hanger



PA Boston Baked Beans
& Brown Bread
4 Gal. Stoneware Crock

Visit our shop: Wed-Fri 10-4 | Sat 11-3 | 2997 Shelburne Road, Shelburne, VT 05482
(802) 489-5210 www.bittnerantiques.com info@bittnerantiques.com



THE 66TH ANNUAL
New Hampshire Antiques Show

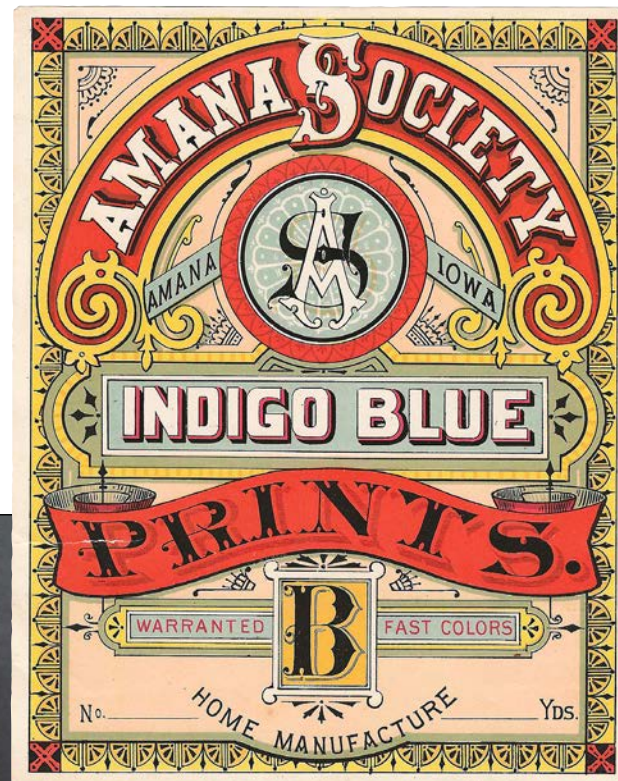
SPECIAL
SHOW
SECTION



THE NORWOODS' SPIRIT OF AMERICA, Timonium, Md. — Exceptional and early nine-tube tin round candle mold, 11½ inches high, with wonderfully curved handles.



CHRISTOPHER & BERNADETTE EVANS
ANTIQUES, Waynesboro, Va. — Rare Rockingham glaze pitcher with molded eagles and tree, about 10 inches tall.



DeWOLFE & WOOD, Alfred, Maine — Colorful Amana Society label.



STEVEN F. STILL ANTIQUES, Manheim, Penn. — Rare cast iron spaniel blinking eye clock by Bradley and Hubbard.

August 10 – 12, 2023

THURSDAY & FRIDAY: 10AM – 7PM

SATURDAY: 10AM – 4PM

DoubleTree by Hilton
Manchester, NH • 603.625.1000

Douglas R Wyant
ANTIQUES

*Come
see the
other
23!*



Found in Hillsdale, MI



**920 E State Street
Cassopolis, MI 49031
269-214-6354**



**SPECIAL
SHOW
SECTION**

THE 66TH ANNUAL New Hampshire Antiques Show



THOMAS M. RAWSON, Cedar Rapids, Iowa — A 17-inch-tall folk art carving of a woman holding cup.



JEWETT-BERDAN ANTIQUES, Newcastle, Maine — Large early rare Pennsylvania chalkware Belsnickle in original paint.



DAVID THOMPSON ANTIQUES & ART, South Dennis, Mass. — Eighteenth Century agateware or marbled creamware plant or bulb pot with impressed mark "Wedgwood & Bentley." Josiah Wedgwood and Thomas Bentley were in partnership from 1768 to 1780. This great survivor is in delicious shades of caramel, chocolate and vanilla. Tooled rim. Four tight hairlines. The lid is long gone. Height: 6 inches; Diameter: 8 inches. Obtained privately from a great old collection.



BITTNER ANTIQUES, Shelburne, Vt. — Luigi Lucioni, "Red Barn & Silo, oil on board, 6 3/4 by 5 inches, with provenance.

Sir Walter Raleigh Tobacco Trade Figure



Attributed to the shop of Samuel Robb, New York, this figure was made for the J.G. Flynt Tobacco Company for the launch of their Sir Walter Raleigh Pipe Tobacco in 1884.

Illustrated in Cigar Store Figures in American Folk Art (p. 26). White pine; retains an historic period paint surface; 79" high

Kelly Kinzle

www.kellykinzleantiques.com

kelly@kellykinzleantiques.com

717-495-3395



THE 66TH ANNUAL New Hampshire Antiques Show

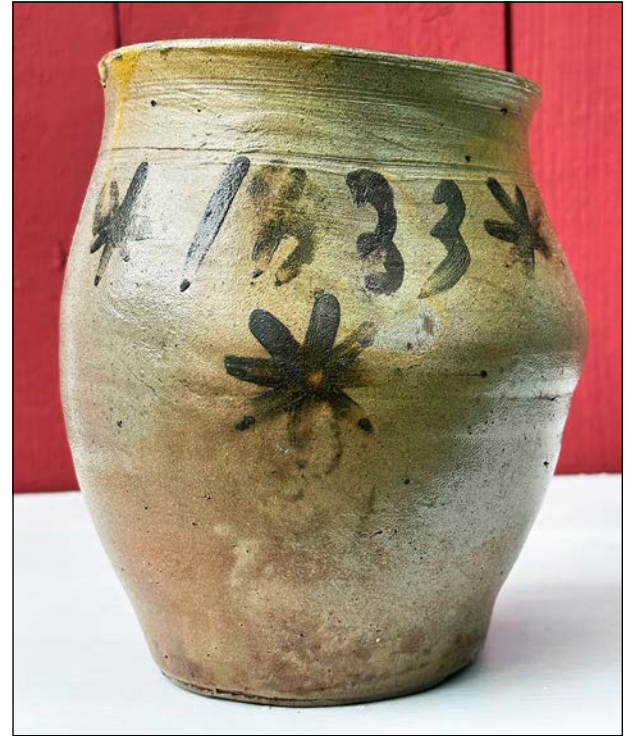
SPECIAL
SHOW
SECTION



STEPHEN / DOUGLAS, Walpole, N.H. / Rockingham, Vt. — Very small, Nineteenth Century Hitchcock type, child's chair with unusual, bold, original decoration.



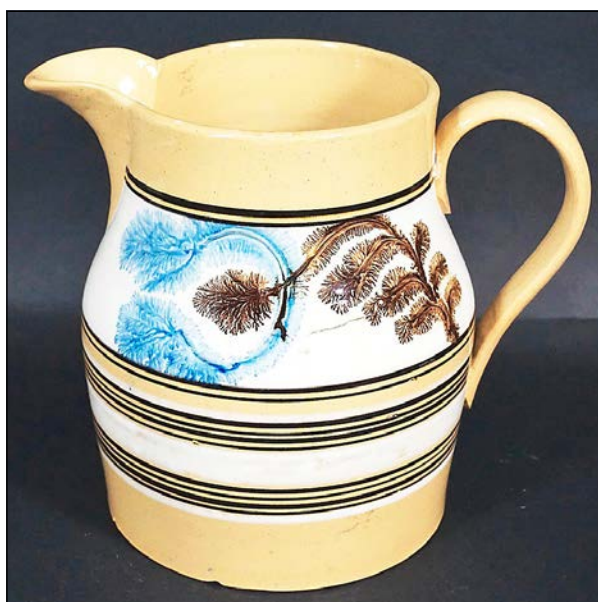
JUDITH & JAMES MILNE, Kingston, N.Y. — Large bicycle whirligig in an old painted surface.



JEFF & HOLLY NOORDSY, Cornwall, Vt. — Sweet little New Jersey stoneware pot dated 1833.



JEFFREY TILLOU ANTIQUES, Buffalo, N.Y. — Carved standing dog, American, circa 1880-1900, carved wood with original painted surface. A stylized figure of a carved dog with glass eyes. Excellent original condition, wonderful oxidized surface, wooden base possibly of a later date. Provenance: Private Collection of Pat and Rich Garthoeffner. Dimensions: 14-1/8 inches high, 15 1/2 inches wide, 4-7/8 inches deep.



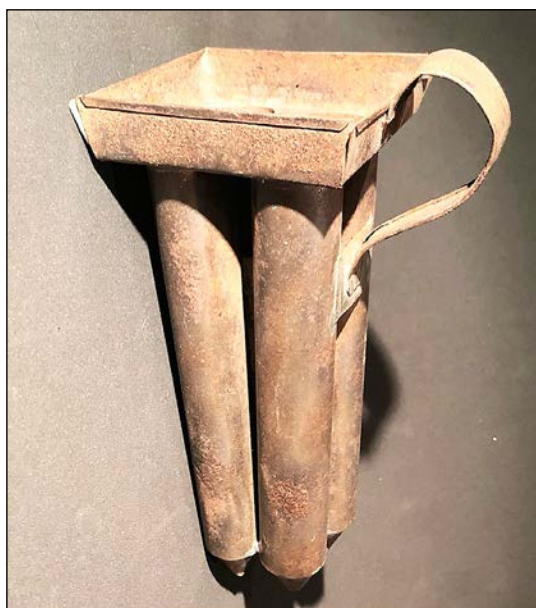
STEVEN F. STILL ANTIQUES, Manheim, Penn. — Large yellowware pitcher with blue and brown tulip decoration in excellent condition. Height: 9 inches.



NATHAN LIVERANT AND SON ANTIQUES, Colchester, Conn. — Queen Anne maple side chair with dry red surface and carved knee brackets, New England, possibly Portsmouth, N.H., area, 1770-85.



HOLLIS BRODRICK, Portsmouth, N.H. — Part of a selection of Eighteenth Century prints of historical American interest, together with a period pair of early American, Nineteenth Century, mirror back sconces with original wooden drop finials.



CHRISTOPHER & BERNADETTE EVANS ANTIQUES, Waynesboro, Va. — Miniature four-tube candle mold, American, Nineteenth Century, measuring approximately 6 inches long.



JEWETT-BERDAN ANTIQUES, Newcastle, Maine — A green glazed terracotta dog, late Nineteenth Century.

SPECIAL
SHOW
SECTION

THE 66TH ANNUAL
New Hampshire Antiques Show



THE NORWOODS' SPIRIT OF AMERICA
CHOICE AMERICANA OF THE 18TH AND 19TH CENTURIES

Everyone Is Coming To The Show



Well-rendered painting of the Steamboat "Mary Powell". Built in 1861, it operated on the Hudson River for over fifty years.
Size: 19 and 1/2" x 39 and 1/2" (+/-)



Exuberant hooked rug, with excellent composition and fine detail. Circa late 19th century.
Professionally mounted.
Size: 26" x 69" (+/-)

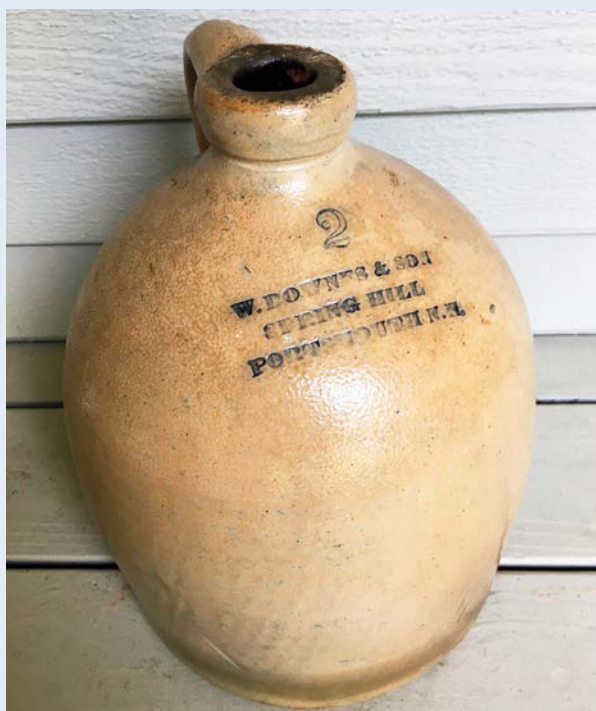


Exceptional 19th century wall-papered hat box.
Wonderful size:
22"L, 19"W, 14"H (+/-)

Time To Pack Your Bags and Go!

DOUG AND BEV NORWOOD
410.252.2012  spiritofamerica@comcast.net

MELISSA ALDEN Antiques Portsmouth, New Hampshire



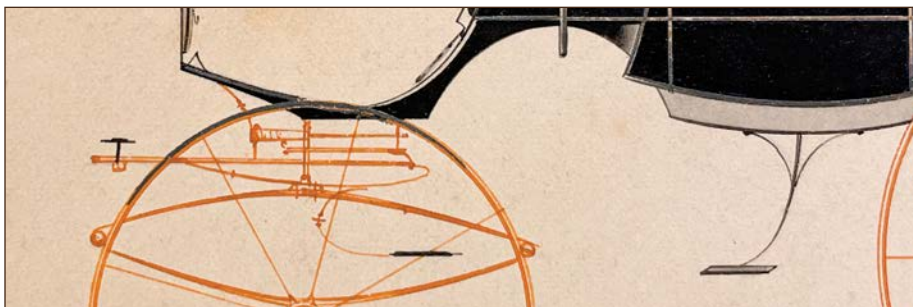
Text: 603-501-9911

Email: mscarterportsmouth@gmail.com



THE 66TH ANNUAL New Hampshire Antiques Show

SPECIAL
SHOW
SECTION



OLD AS ADAM.

Adam Irish ~ Antiques & Americana



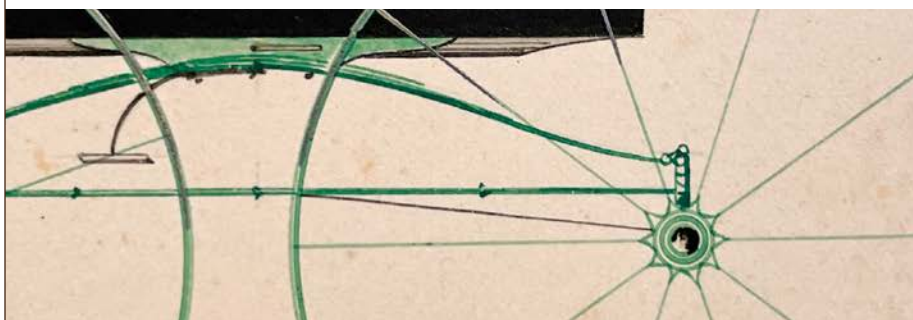
HETFIELD & JACKSON
RAHWAY, N. J.

*Group of original ink and watercolor
carriage design renderings,
New Jersey, c. 1870*



(each 7 x 11 inches)

Booth
No 10



VISIT THE STORE

125 Benefit Street in Providence, RI

SHOP ONLINE

www.oldasadam.com ~ @oldasadam

Tel. 603-661-9373 ~ adam@oldasadam.com



JEF & TERRI STEINGREBE, New London, N.H. — Carved and painted alligator with metal teeth.



STEPHEN / DOUGLAS, Walpole, N.H. / Rockingham, Vt. — Mammoth Nineteenth Century carved cherry cookie board, probably New York state, 27 by 15 inches.



PEWTER & WOOD ANTIQUES, Enfield, N.H. — Late Nineteenth Century tole tray depicting conch shell and fruit painted on black ground with yellow border and pinstripes. Dimensions: 27¾ inches wide by 20 inches high.



KELLY KINZLE, New Oxford, Penn. — Whimsical chest on chest from Eastern Canada, circa 1820-30.



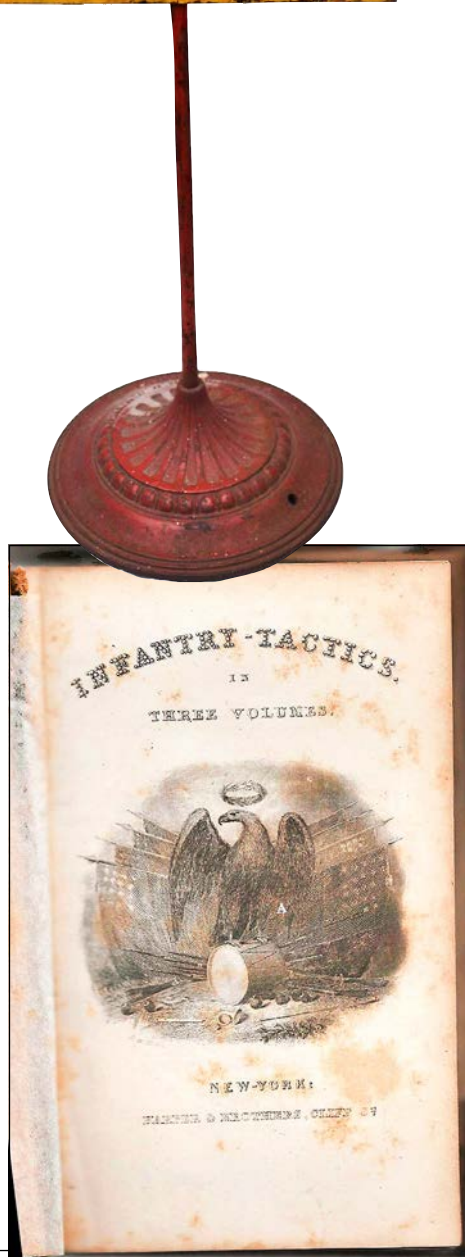
**SPECIAL
SHOW
SECTION**

THE 66TH ANNUAL New Hampshire Antiques Show

VILLAGE BRAIDER, Plymouth, Mass. — Early Twentieth Century oil sign, steel and cast iron in original paint, 29 by 12 inches.



DAVID THOMPSON ANTIQUES & ART, South Dennis, Mass. — Snowy owl doorstop by the H.L. Judd Company of Conn., marked on back with monogram cJo, and number 1287. Early Twentieth Century cast iron in excellent, original paint. Height: 10-5/8 inches.



DeWOLFE & WOOD, Alfred, Maine — Three volumes *Infantry Tactics*.



THE EASTERN INN
Columbiana Cty, Ohio
Dimensions 45" x 78"

NANCY & GENE PRATT
585.330.7203



HOLLIS BRODRICK, Portsmouth, N.H. — A small sampling of many early domestic items I will be bringing to the show, including some exceptional New England redware, and a rare New England turned, lidded sugar bowl, initialed and dated 1790.



THE 66TH ANNUAL New Hampshire Antiques Show

SPECIAL
SHOW
SECTION



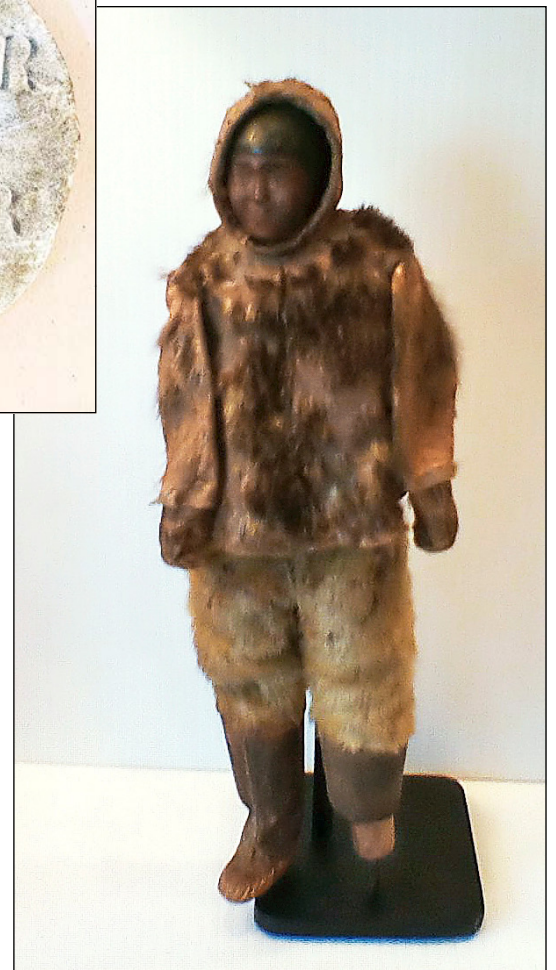
RESSER-THORNER AMERICANA, Manchester, N.H. — Armorial.



BRENNAN & MOUILLESEAU, Briarcliff Manor, N.Y. — American marble wall sign...circa 1813.



JEFF & HOLLY NOORDSY, Cornwall, Vt. — Beautifully turned Nineteenth Century treen master salt with the "best" undisturbed surface.



THOMAS M. RAWSON, Cedar Rapids, Iowa — Folk art carving of an Eskimo with a peg leg.

THOMAS R. LONGACRE ANTIQUES ★ FOLKART



BOOTH
#3

Cast metal eagle in mustard paint with spread wings perched on a red, white, and blue banner decorated with white stars. Original painted surface. The eagle measures 23 inch long by 8 inches high. Manufactured by the VCM Co./Sy H. Burns on the reverse side. Circa 1930's.

46th
SHOW

tom@thomasrlongacre.com



www.thomasrlongacare.com



**SPECIAL
SHOW
SECTION**

THE 66TH ANNUAL New Hampshire Antiques Show



JEFFREY TILLOU ANTIQUES, Buffalo, N.Y. — Exceptional fanback Windsor side chair, Boston, circa 1790, various hard woods, yellow grain-painted surface. Exceptional in form, design, proportions and surface, this fanback side chair has a shaped crest rail with carved ears above spindles flanked by crisply turned vase and ring stiles. The carved, shaped saddle seat is supported by finely turned splayed legs joined by stretchers, the medial stretcher with turned rings. Excellent condition, Nineteenth Century painted surface, customary wear from age and use. Provenance: The Collection of Charles and Olenka Santore. Dimensions: 37¼ inches high, 23 inches wide, 16¾ inches deep, 18¼ inches (seat).



CHRISTOPHER & BERNADETTE EVANS ANTIQUES, Waynesboro, Va. — Ohio sewer tile rabbit signed "EJE" on base, 5½ inches tall, from the first half of the Twentieth Century.



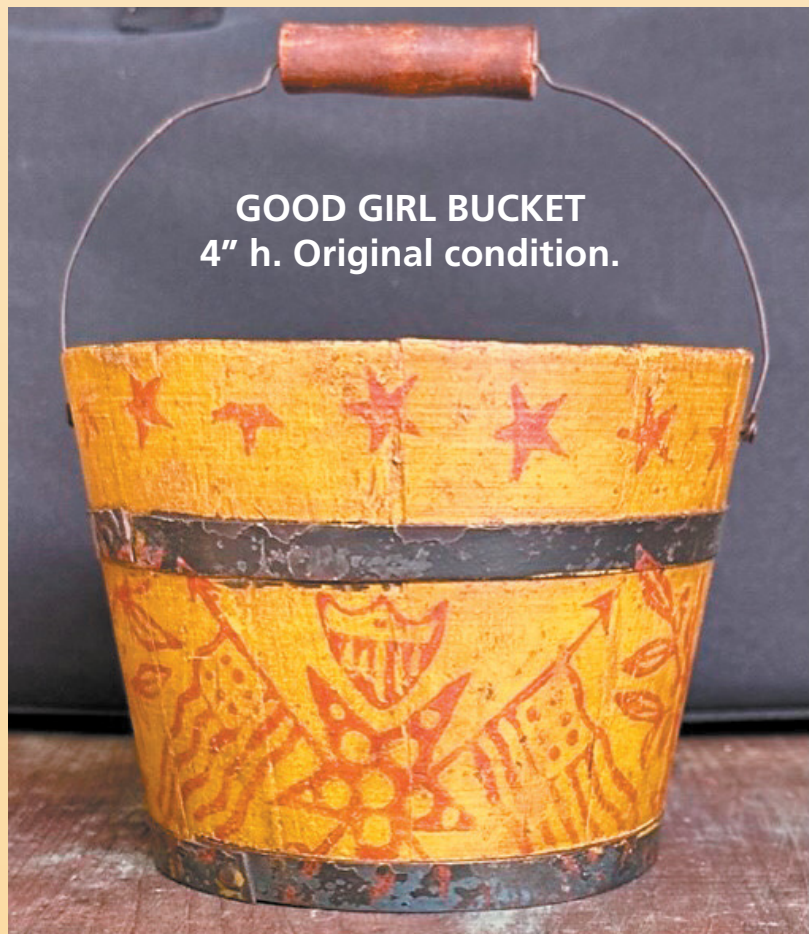
OLIVER GARLAND, Falmouth, Mass. — Rare and unusual Seventeenth Century miniature on panel measuring 4½ by 3½ inches.



HOLLIS BRODRICK, Portsmouth, N.H. — A selection of Eighteenth Century Delftware, glass, etc.

**William R. & Teresa F.
Kurau**
P.O. Box 457,
Lampeter, PA 17537
(717) 464-0731 or
(717) 314-2676
email: Lampeter2@yahoo.com

WWW.HISTORICALCHINA.COM



GOOD GIRL BUCKET
4" h. Original condition.



Jeffrey Roelof

ANTIQUES

269-271-1799

folkart1@yahoo.com



Booth #6



VILLAGE BRAIDER, Plymouth, Mass. — A pair of paintings of the White Mountains, oil on board, "The Flume" and "Mountain Pool," 12 by 9½ inches; the boulder in the flume fell in June 1883.



JEF & TERRI STEINGREBE, New London, N.H. — Four cats hooked rug.



NANCY & GENE PRATT, Victor, N.Y. — Folk art carved and painted minstrel with his dog.



WILLIAM R. & TERESA F. KURAU, Lampeter, Penn. — We will have several pieces of early Staffordshire commemorating Marquis de Lafayette's visit in 1824 — we are encroaching on the 200-year anniversary.



**SPECIAL
SHOW
SECTION**

THE 66TH ANNUAL New Hampshire Antiques Show

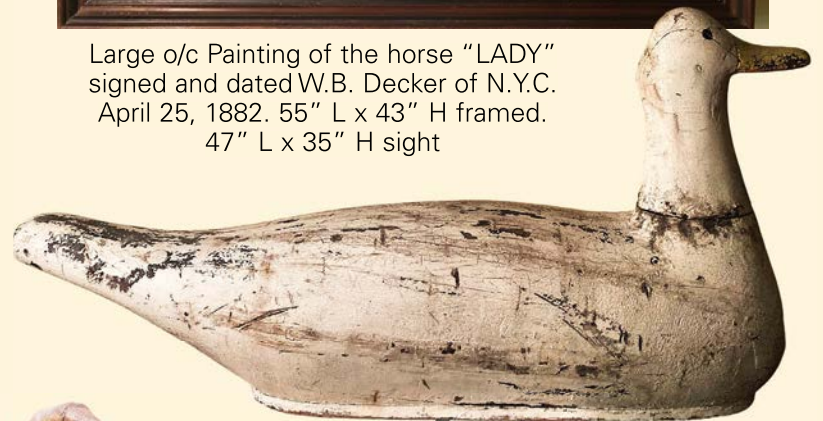


**JEFFREY TILLOU
ANTIQUES, Buffalo,
N.Y.** — Rare pair of
cast iron horse head
hitching posts, Ameri-
can, mid-Nineteenth
Century, original
green painted surface.
This pair of finely
casted horse head
hitching posts with
double rings retain an
exquisite green paint.
The elegant form and
definition to the cast-
ing adds to their desir-
ability. Dimensions: 14
inches high by 7 inch-
es deep.

Sometimes Bigger IS Better!



Large o/c Painting of the horse "LADY"
signed and dated W.B. Decker of N.Y.C.
April 25, 1882. 55" L x 43" H framed.
47" L x 35" H sight



Monumental
Seagull Confidence
Decoy retaining an
old painted surface.
46" L x 12" D x
24" H.



Oversized Cornucopia
Trade Sign from a
farm in Walpole N.H.
retaining traces
of it's old painted
surface. c-1930s



A sampling of a
large collection of
DOORSTOPS we
will be bringing

JUDITH & JAMES MILNE

KINGSTON, NY

917 402 1778 or 917 754 5454

www.milneinc.com | jmilneantiques@gmail.com

BOOTH 14



NANCY & GENE PRATT, Victor, N.Y. — Folk
art bird tree with eight birds.

PEWTER & WOOD ANTIQUES, Enfield, N.H. —
A 10th Anniversary tin horn, Nineteenth Cen-
tury, with the center horn surrounded by four
smaller horns. Sound comes through a single
mouthpiece. Dimensions: 17 inches high;
5-inch diameter.



BOB JESSEN & JIM HOHNWALD, Fitzwilliam, N.H. — Pair of ladder-
back side chairs with splint seats in original paint. Early tilt-top tea
table in original surface. Early New England "cake-top" lantern, Eigh-
teenth Century.



THE 66TH ANNUAL New Hampshire Antiques Show

SPECIAL
SHOW
SECTION

August 10 – 12, 2023

THURSDAY & FRIDAY: 10AM – 7PM

SATURDAY: 10AM – 4PM

DoubleTree by Hilton
Manchester, NH • 603.625.1000

HOLLIS BRODRICK, Portsmouth, N.H. — Rare Eighteenth Century New Hampshire connected andiron, together with a rare, tiny, American, bulbous cast iron kettle.



JEWETT-BERDAN ANTIQUES, Newcastle, Maine — Early carved wooden finials of corn.

WILLIAM R. & TERESA F. KURAU, Lampeter, Penn. — A large selection of creamware Liverpool pitchers and bowls of American interest available in our booth at the show.



PEWTER & WOOD ANTIQUES, Enfield, N.H. — Black man, 9 1/2 inches high, Composition head and sculpted face. Extremely well made with detailed clothing, brown hat, walking stick, brown coat, dark blue trousers tan sweater.



Extremely rare Dobereiners
Lamp invented in 1823

Thomas M. Rawson

CEDAR RAPIDS, IA
319-389-2041

*American Folk Art, Redware and Stoneware Pottery,
Naive and Sophisticated Paintings*



Tsimshian Northwest Coast house
totem with raven and bear 1900 to 1920



Oil on canvas of Mississippi Steamship
by Brian Coole



Beautiful ovoid redware jug
attributed to Gonic, NH circa 1820



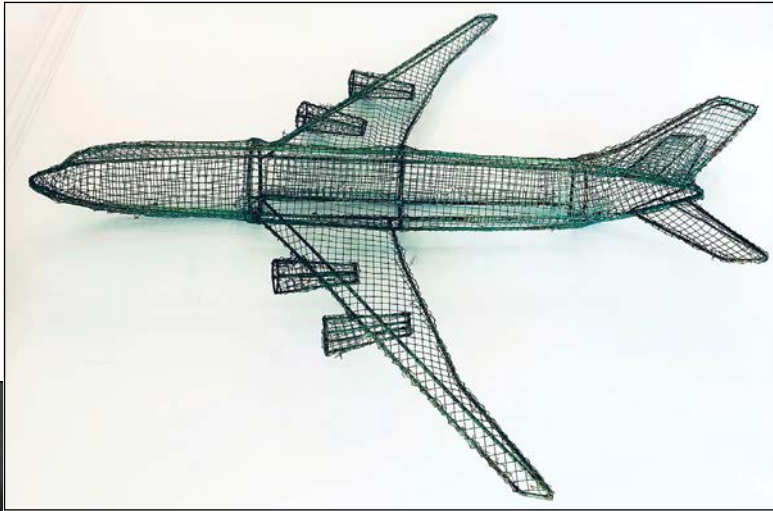
Carved wooden dove by Albert Zahn from
Door County, Wisconsin circa 1920's



**SPECIAL
SHOW
SECTION**

THE 66TH ANNUAL New Hampshire Antiques Show

BRENNAN & MOUILLE-SEAUX, Briarcliff Manor, N.Y. — Large 1960s hanging sculpture of a 707 in green (!) paint, clearly the work of an obsessive metal crafter.



RESSER-THORNER AMERICANA, Manchester, N.H. — Lafayette sulfide, circa 1825.



JUDITH & JAMES MILNE, Kingston, N.Y. — Unusual carved and painted wood squirrel weathervane.



JEF & TERRI STEIN-GREBE, New London, N.H. — Cast iron black painted musical notes andirons.

PAM & MARTHA BOYNTON ANTIQUES



SMALL COVERED BASKET, NATURAL WITH BLACK, MINT CONDITION, 6.25" X 4" X 4.5"



MINIATURE APPLE TRAY, RED WITH BLACK, 5.75" X 5.75" X 2.5"



RARE CHILD'S MOTTO MUG, "FOR MY LITTLE NIECE"



PORTRAIT OF YOUNG WOMAN, ATTR. G. HARTWELL, OVERSIZED

WE HAVE MOVED.....AROUND THE CORNER;
FROM BOOTH 61 TO 51, PLEASE VISIT US THERE



MOTHER CAT & KITTEN, OIL ON ARTIST BOARD, UNTOUCHED ORIGINAL CONDITION, 6.25" X 9" SITE, PERIOD GOLD FRAME



PAINTED BASKET, ROBINS EGG BLUE, MINT CONDITION
W: 10.75" X H: 12"

PAM & MARTHA BOYNTON 1 GREELEY RD. TOWNSEND, MA 01469 • 978-835-5920



THE 66TH ANNUAL New Hampshire Antiques Show

SPECIAL
SHOW
SECTION



STEPHEN / DOUGLAS, Walpole, N.H. / Rockingham, Vt. — Large, boldly decorated, early Nineteenth Century American slipware loaf dish.

DAVID THOMPSON ANTIQUES & ART, South Dennis, Mass. — Lovely, finely made crib quilt in the Log Cabin pattern. All hand-sewn, in cotton, silk and velvet, with glazed cotton back. Excellent condition. 1870-80. 21¼ by 17½ inches.



SHERIDAN LOYD AMERICAN ANTIQUES, St Joseph, Mo. — Late Nineteenth Century Waldoboro-style hooked rug depicting a recumbent stag, with nice color, measuring 33 inches wide by 24 inches tall. Professionally mounted for display.



CHRISTOPHER & BERNADETTE EVANS ANTIQUES, Waynesboro, Va. — A matched pair of painted Woodlands Indian baskets, Northeast, late Nineteenth Century, 11 inches wide. Excellent condition.

*All will be revealed
August 10th*

John Chaski Inc. - Dover, Delaware - 302-448-6492 - john@johnchaski.com



**SPECIAL
SHOW
SECTION**

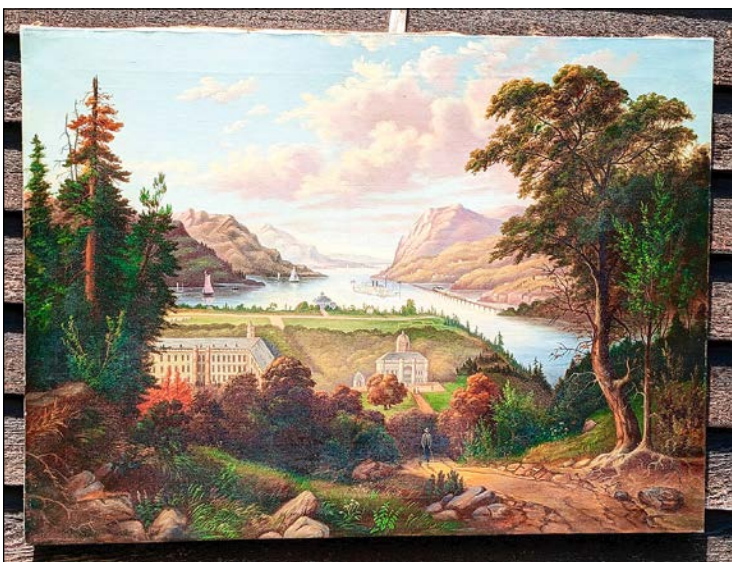
THE 66TH ANNUAL New Hampshire Antiques Show



BRENNAN & MOUILLE-SEAUX, Briarcliff Manor, N.Y. — A 1960s Brutalist wall sculpture made from found pieces of copper by Rhoda (!) Howard.



SHERIDAN LOYD AMERICAN ANTIQUES, St Joseph, Mo. — American country candlestand, late Eighteenth Century, ash and maple, octagonal top and cross base. Age splits and minimal burn loss. Pictured plate 127 in *Antiques Illustrated & Priced* by Norman Hudson. Provenance: From the Henry Ford Museum (Michigan); Ex Clark Garrett (Ohio)



VILLAGE BRAIDER, Plymouth, Mass. — Nineteenth Century carved and painted "Sun Face," Italian, 12 by 10 inches.



SCOTT BASSOFF * SANDY JACOBS, Swampscott, Mass. — Dramatic oil on canvas of West Point showing a paddle wheeler and sail boats on the river. A steam engine is traveling across the opposite side of the river. Great detail and colors. Painting measures 32 by 23½ inches out of frame.



BAKER & Co. ANTIQUES



BAKERCoANTIQUES.COM

Tom R. Baker
Delmar, NY

Booth 60

831.818.8809
tom@bakercoantiques.com

THE 66TH ANNUAL New Hampshire Antiques Show

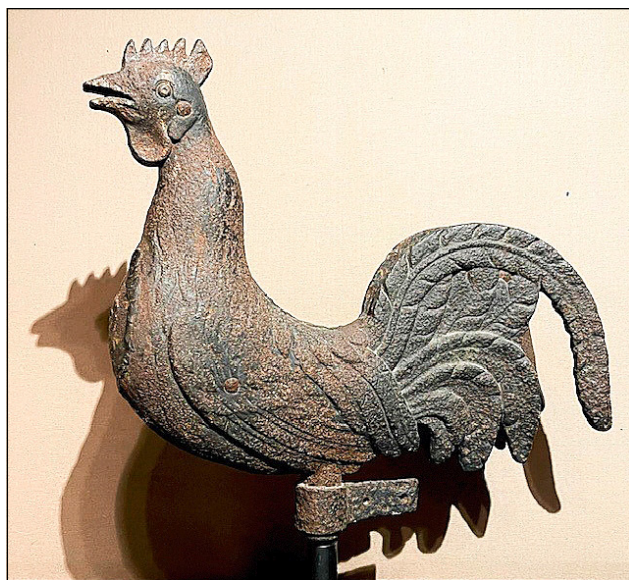
SPECIAL
SHOW
SECTION



VILLAGE BRAIDER, Plymouth, Mass. — Nineteenth Century candle mold, 36 tubes.



ROBERT FOLEY, Gray, Maine — Bas-relief wood carving of colonial woman in original white paint.



JEWETT-BERDAN ANTIQUES, Newcastle, Maine — Early heavily detailed cast iron rooster weathervane.

THOMAS M. RAWSON, Cedar Rapids, Iowa — Whimsy bottle with wonderful folk carved carpenters and tools.



Bob Jessen & Jim Hohnwald

Fitzwilliam, NH



603-585-9188



Booth 27

*Oval top Tea Table Old red paint.
NE, CA 18th Century*

*3 Windsor Chairs in old black paint
over original red. CA. 18th c*



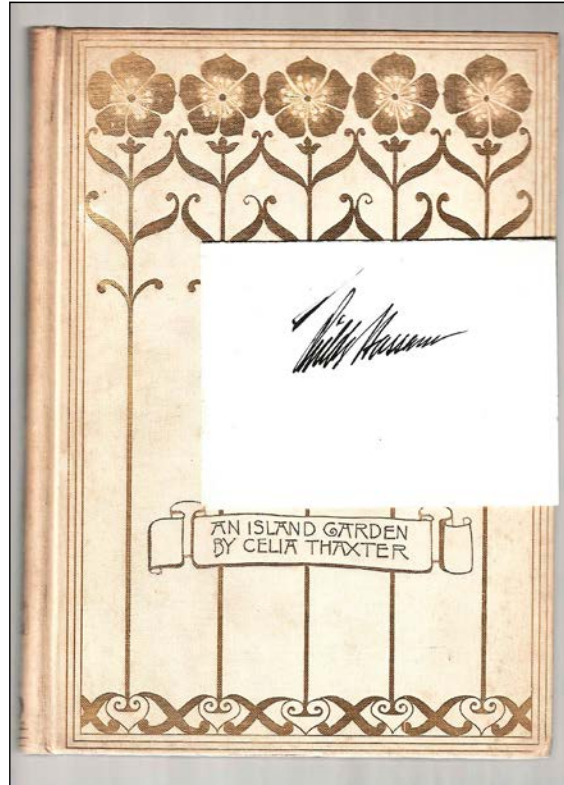


**SPECIAL
SHOW
SECTION**

THE 66TH ANNUAL New Hampshire Antiques Show



JEWETT-BERDAN ANTIQUES, Newcastle, Maine
— Early basket in great form in old green paint.



WILLIAM R. & TERESA F. KURAU, Lampeter, Penn. — Historical Staffordshire blue platter "New York From Weehawken" by Andrew Stevenson. One of several New York historical views that we will have at the show.

DeWOLFE & WOOD, Alfred, Maine — Celia Thaxter, *Island Garden* with Childe Hassam signature.



KELLY KINZLE, New Oxford, Penn. — Tavern sign for the General Greene Inn, Buckingham, Bucks County, Penn.



The 66th Annual
New Hampshire Antiques Show
August 10 – 12, 2023

THURSDAY & FRIDAY: 10AM – 7PM, SATURDAY: 10AM – 4PM
DoubleTree by Hilton, Manchester, NH • 603.625.1000



GARTHOEFFNER GALLERY
Antiques

Pat and Rich Garthoeffner
ANTIQUES & ART

Lititz, PA 17543

717-581-0935

717-471-4694

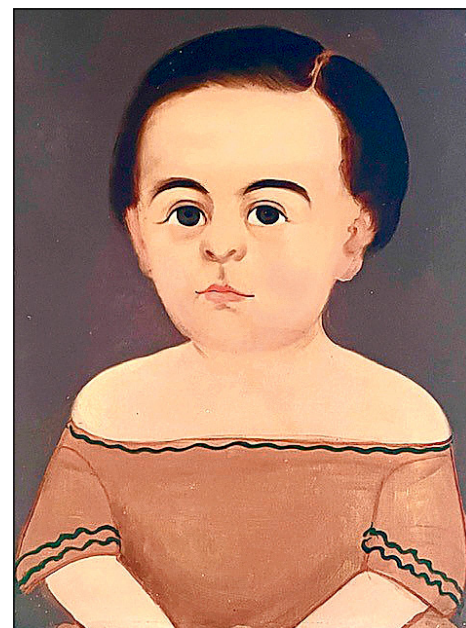


THE 66TH ANNUAL
New Hampshire Antiques Show

SPECIAL
SHOW
SECTION



WILLIAM R. & TERESA F. KURAU, Lampeter, Penn. — A large selection of Historical Blue Staffordshire, some of which are from long time collections that haven't been on the market in decades, will be displayed in our booth.



JEWETT-BERDAN ANTIQUES, New-castle, Maine — Charming Prior Portrait in unusual pumpkin color dress.

JUDITH & JAMES MILNE, Kingston, N.Y. — One of three cast iron doves.

MATTHEW EHRESMAN

ANTIQUES

3090 Blake Road
Wadsworth, Ohio 44281
Cell 330-265-7669



RESSER-THORNER AMERICANA, Manchester, N.H. — Rare Eighteenth Century miniature mezzotint portrait of Charlotte Corday, the murderer of Marat, with a 1793 pencil reference on verso.



**SPECIAL
SHOW
SECTION**

THE 66TH ANNUAL New Hampshire Antiques Show



STEVEN F. STILL ANTIQUES, Manheim, Penn. — Carved and painted folk art rooster, found in Lancaster County, from the Twentieth Century. Height: 12 inches.

PETER SAWYER ANTIQUES, Exeter, N.H. — Mahogany lolling chair with nicely shaped back and arms, Massachusetts, circa 1810.



SHERIDAN LOYD AMERICAN ANTIQUES, St Joseph, Mo. — This little folk art footstool is inlaid with the initials "JHA" above an inlaid pinwheel over the date "1880." The legs are mortised through and the scalloped skirt has an incised design on one side.

NANCY & GENE PRATT, Victor, N.Y. — Carved effigy ladle with bird figure, maple, Woodland Indians.



Chippendale cherry tall clock with engraved brass dial and unusual block printed arch decoration. Stephen Hasham of Charlestown, New Hampshire, 1785-1810.

Provenance:
Frederick and Susan
Copeland Collection.

NATHAN LIVERANT AND SON, LLC ANTIQUES



168 SOUTH MAIN STREET
P.O. BOX 103, COLCHESTER, CT 06415
(860) 537-2409 mail@liverantantiques.com

Visit us at: liverantantiques.com
Follow us at: [Instagram.com/liverant.antiques](https://www.instagram.com/liverant.antiques)



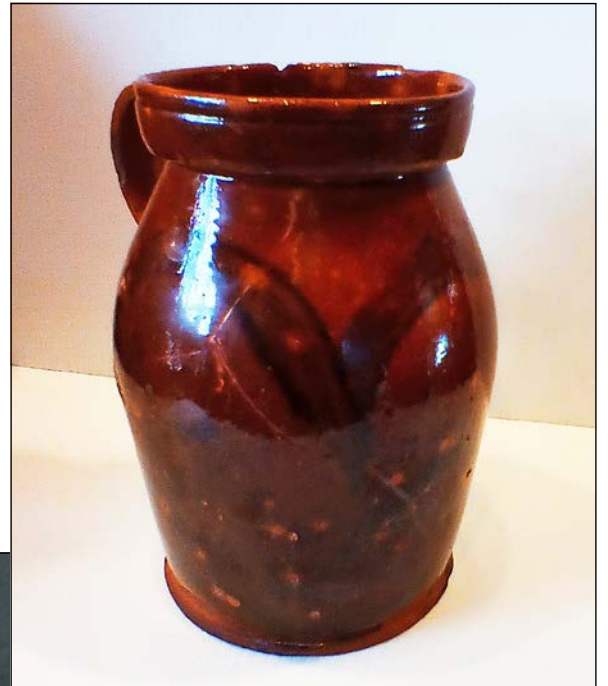
THE 66TH ANNUAL New Hampshire Antiques Show

**SPECIAL
SHOW
SECTION**



DOUGLAS R. WYANT ANTIQUES,
Cassopolis, Mich. — American
Shield bucket.

THOMAS M. RAWSON, Cedar
Rapids, Iowa — Redware cream
pot with unusual manganese
swath decoration by the Clark
family of Lyndeborough and
Concord, N.H.



STEPHEN / DOUGLAS, Walpole, N.H. / Rockingham, Vt. —
Early Nineteenth Century needlework pillow cover by
Oliver Ackley.



JUDITH & JAMES MILNE, Kingston, N.Y. — Nineteenth Century folk
root head decoy.



JEFFREY TILLOU ANTIQUES



Thomas H. Stevenson
(1817-1882 or 89)
American School, lived/active;
Ohio and Indiana,
Wilderness Pioneers,
also known as
Western Expansion.
Signed and dated (l.l.),
T.H. Stevenson, 1870.
Oil on canvas, in a custom
carved gilt frame.
33" x 52 1/2", 42 1/2" x 62"
with frame.
Over-all in excellent condition.
Provenance: Babcock Gallery,
New York, NY.

On the Green in Litchfield, CT
860.567.9693
www.tillouantiques.com



**SPECIAL
SHOW
SECTION**

THE 66TH ANNUAL New Hampshire Antiques Show



PEWTER & WOOD ANTIQUES, Enfield, N.H. — “Sisters,” three Amish dolls, 16 inches high, blue dress, black bonnet; 14¼ inches, brown dress, matching bonnet and pinafore; and 10 inches, grey dress and bonnet.

August 10 – 12, 2023

THURSDAY & FRIDAY: 10AM – 7PM
SATURDAY: 10AM – 4PM

DoubleTree by Hilton
Manchester, NH • 603.625.1000



BAKER & CO ANTIQUES, Delmar, N.Y. — A circa 1840 watercolor on paper “Reward of Merit” attributed to the Rockhill Artist, Bucks Co., Penn.

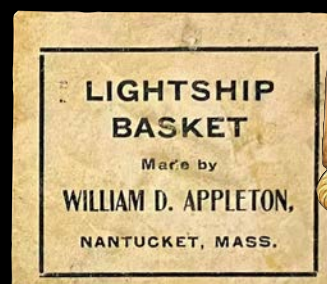


SCOTT BASSOFF * SANDY JACOBS, Swampscott, Mass. — Endearing miniature painting of young girl in white dress holding a basket of fruit on one arm and a peach in the other. Frame measures 4 by 6 inches.



JEWETT-BERDAN ANTIQUES, Newcastle, Maine — Diminutive Maine four-drawer chest with a wild vinegar decorated top and backplash, circa 1835, out of our personal collection.

John Hunt Marshall ANTIQUES



413-519-1715

johnhuntmarshall3@gmail.com



Booth 14
Booth 32
Booth 31
Booth 10
Booth 28
Booth 46
Booth 7
Booth 36
Booth 34
Booth 30
Booth 8
Booth 6
Booth 45
Booth 15

Booth 55
Booth 21
Booth 43
Booth 39
Booth 22
Booth 24
Booth 12
Booth 51
Booth 48
Booth 49
Booth 4
Booth 37
Booth 42
Booth 2

